



20 Fairway Drive RYE VIC

3 1 2

Nestled in the rustic heart of the sought-after Tyrone pocket, this 3 bedroom solid home is just a short walk from the waters edge and represents an abundance of opportunities. Situated on a generous allotment of approximately 780m², slightly elevated with privacy and ample off street parking.

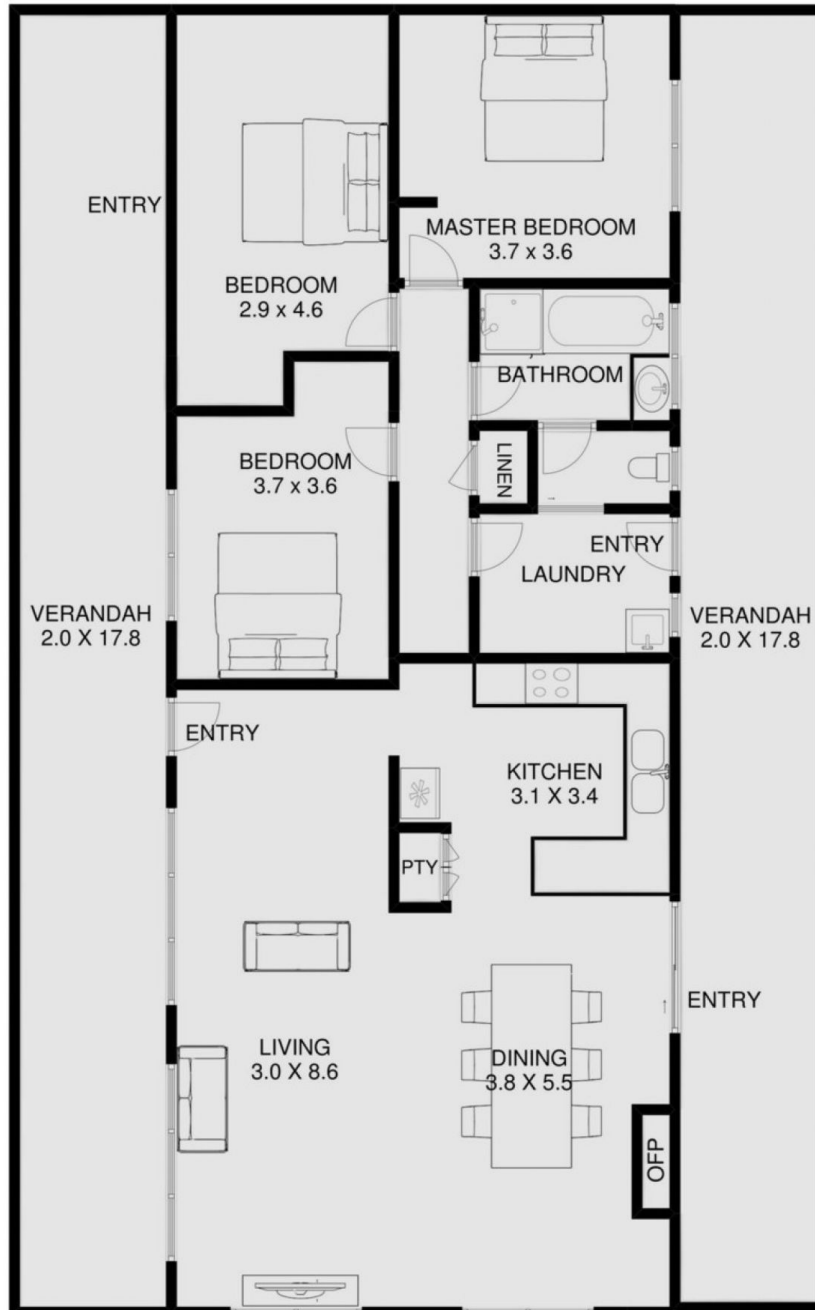
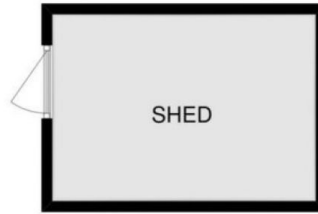
Land Size : 780 sqm
View : <https://www.ypa.com.au/7393192>

Featuring:

- * Open living space for the largest of families with three bedrooms
- * This home is perfect for renovators, permanent, weekenders or savvy investors
- * A cosy fire with open dining & living area let the relaxation and entertaining begin



Jade Springer
0437 410 791



INTERNAL LIVING AREA
APPROX: 13.2 SQUARES

VERANDAH'S
APPROX: 7.6 SQUARES

TOTAL AREA
APPROX: 20.8 SQUARES

20 FAIRWAY DRIVE RYE

This is an artistic representation. All measurements, dimensions and illustrated areas are approximate. It is the responsibility of all interested parties to verify all data depicted and omitted.