



## 18 Goyarra Street RYE VIC

2 1 2

This quaint, quintessential beach pad is ideal for those looking for that perfect weekend getaway, ideal investment or perhaps your first Southern Peninsula home. Whatever plans you have for this glorious coastal gem you'll be sure to love every minute of living here!

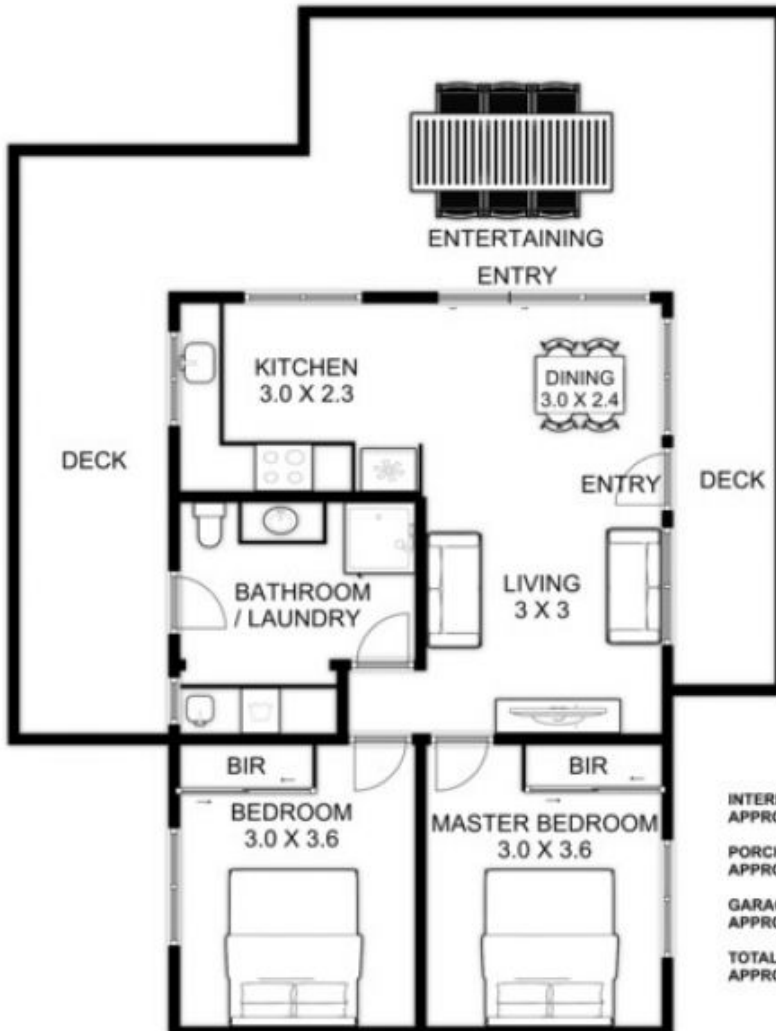
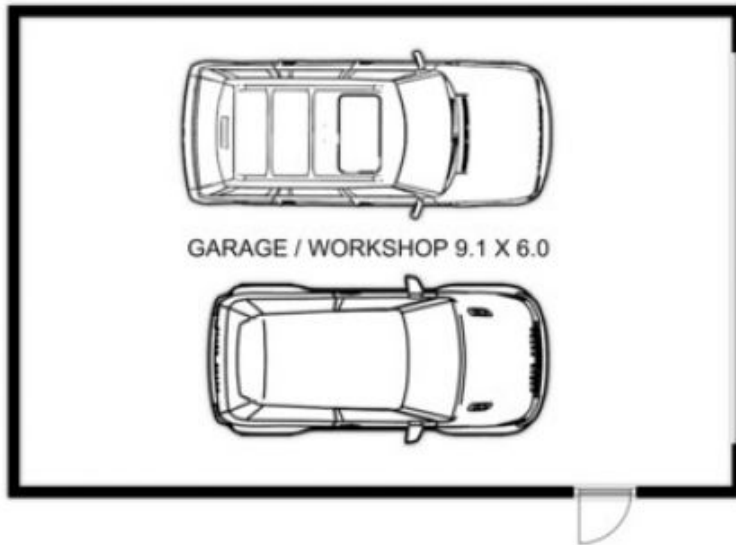
Relaxed and understated in its design, the home's interiors reflect a simple yet idyllic space. Two large bedrooms, spacious bathroom and open plan living, dining and kitchen area make up the floor plan whilst a modern, neutral colour palette used on the walls, flooring and tactile elements of each room contribute to the overall casual and laid back feel of the home. The indoors connect with perfect rhythm to the backyard through the seamless integration of a large undercover deck; summer nights with friends and family will be a delicious prospect as you enjoy the unwind of a busy week in this space.

**Land Size** : 533 sqm  
**View** : <https://www.ypa.com.au/7393212>



**Tony Talarico**  
0420 778 401





INTERNAL LIVING AREA  
APPROX: 6.3 SQUARES

PORCH AND DECKS  
APPROX: 5.1 SQUARES

GARAGE  
APPROX: 5.9 SQUARES

TOTAL AREA  
APPROX: 17.3 SQUARES

# 18 GOYARRA STREET RYE

This is an artistic representation. All measurements, dimensions and illustrated areas are approximate. It is the responsibility of all interested parties to verify all data depicted and omitted.