



97 Francis Street RYE VIC

4 2 2

VIEW OUR VIDEO TOUR

Understated elegance and modern simplicity rule supreme in this generous home of grand proportions. Commanding attention and rightfully so, from the street you are left curiously pondering I wonder whats inside? As you step over the threshold and look behind the heavy oversized front door, a world of considered design and luxury awaits you.

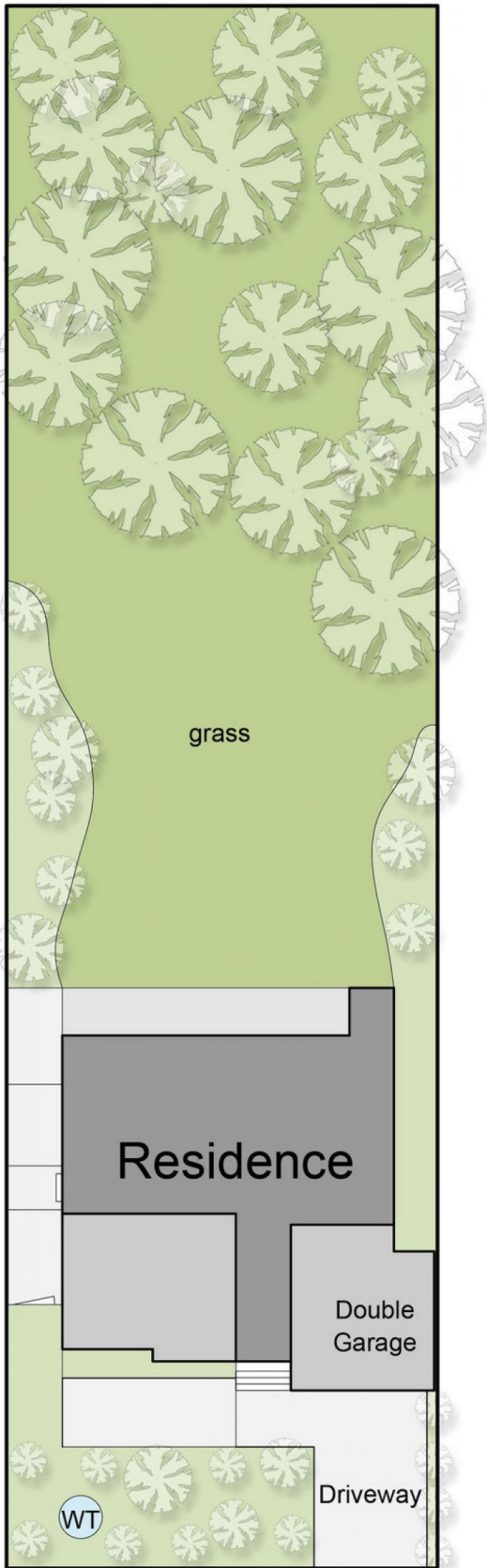
Artful attention to detail is immediately discernible and the careful consideration of each design element that has gone into creating this masterful residence is evident at every turn. From the outset, the current owners of Monomeeth had a simple brief. To create a comfortable space that captured the views, offered privacy and felt luxurious. The bespoke beauty created here is a tremendous example of complete cohesion between architecture and interiors. The

Land Size : 1233 sqm

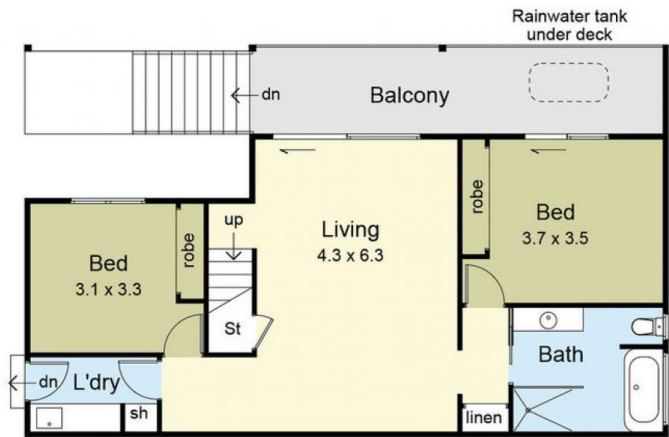
View : <https://www.ypa.com.au/7393224>



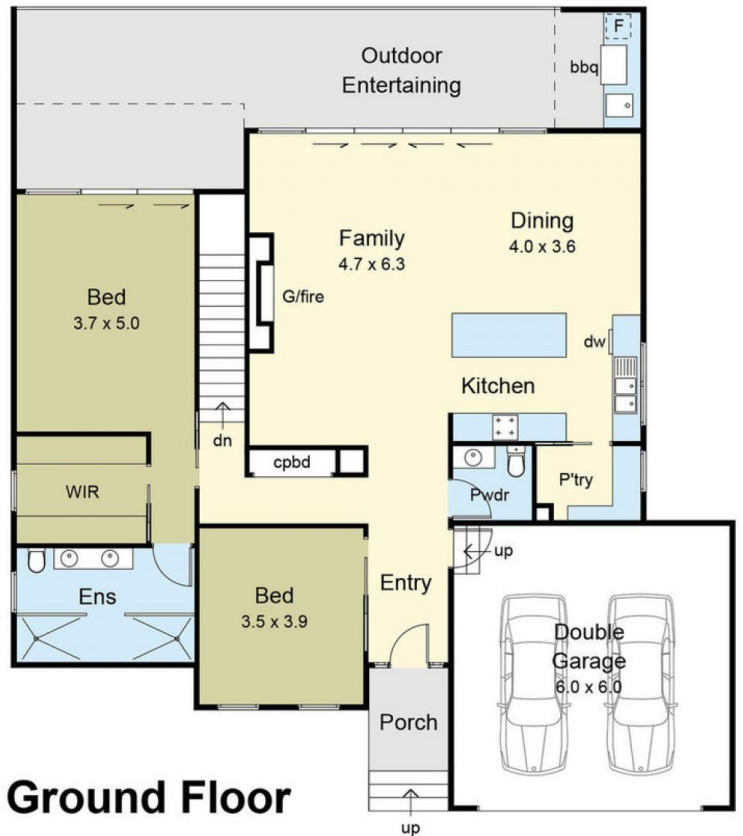
Tony Talarico
0420 778 401



Site Plan



Lower Ground Floor



Ground Floor

97 Francis Street, Rye

This floor plan has been prepared with all due care to the accuracy of the above information. Purchasers are advised to make their own investigations.

