

33 Weir Street RYE VIC

3 **1** **1**

OPEN SATURDAY 30TH MAY AT 12PM

If unable to attend open call JADE on 0437 410 791 to arrange a private inspection.

VIEW OUR VIDEO TOUR

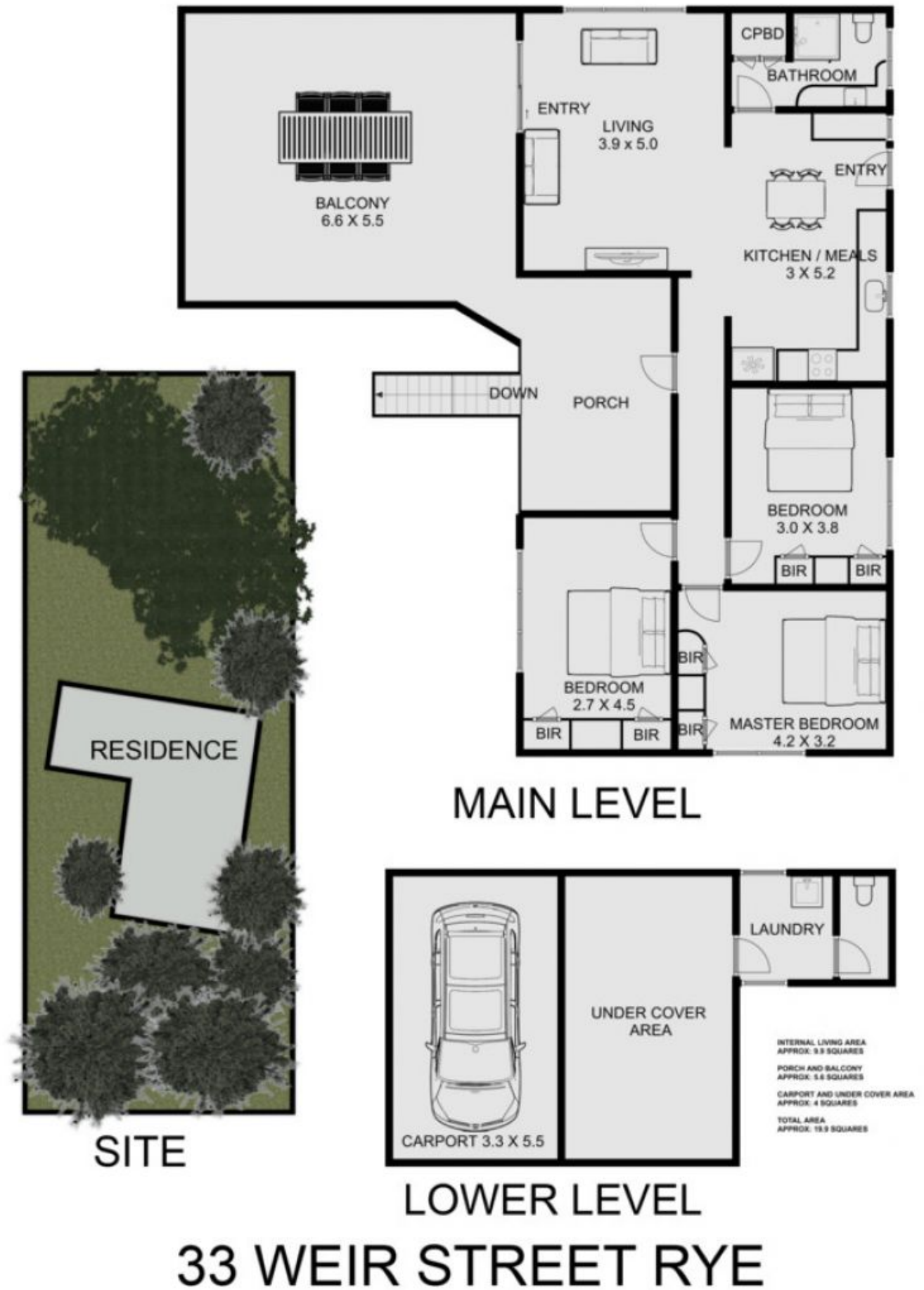
An incredible opportunity exists to create a bright new future in one of the finest locations on the Southern Mornington Peninsula with this unique and intriguing property. A land of possibility and a home presenting many options, this once in a lifetime chance presents one lucky new owner with unprecedented scope to design a life less ordinary. The existing three bedroom home, sitting proudly on a magnificent allotment of approximately *1013m2, is spread over two levels and offers great potential to either extend, renovate or replace with something a little newer

Land Size : 1013 sqm

View : <https://www.ypa.com.au/7393226>



Jade Springer
0437 410 791



This is an artistic representation. All measurements, dimensions and illustrated areas are approximate. It is the responsibility of all interested parties to verify all data depicted and omitted.