



35 Edgar Street RYE VIC

3 **2** **2**

VIEW OUR VIDEO TOUR

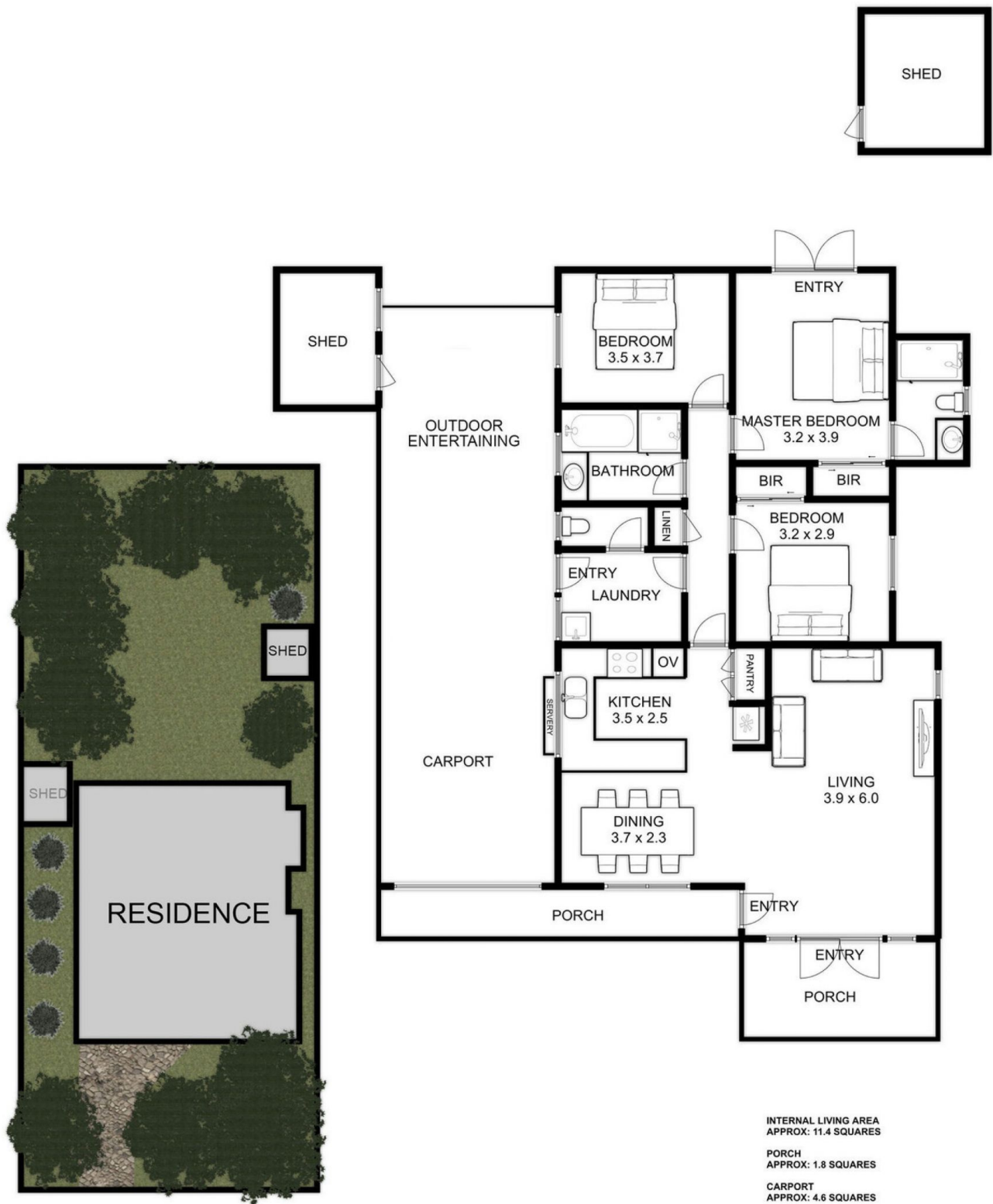
Simply meaning 'beautiful' 'MERINDAH' is a delightful example of seaside living and what it means to truly enjoy life here on the magnificent Southern Peninsula. Beautiful interiors reflect a neutral colour palette and exude a sophisticated coastal charm that will have you smiling in your new sanctuary. This picture perfect property represents a rare opportunity to secure your very own slice of a desired region of Victoria. MERINDAH is situated on a pristine, low maintenance allotment of 605m²* surrounded by lush landscaped native gardens of moonahs and fruit trees. Showcasing the ultimate indoor/outdoor living by boasting multiple outdoor entertainment areas and access points linking the bright open-plan interior with tranquil gardens. Direct access to the garden breakfast bistro from the Master suite allows for a vacation-style start to your

Land Size : 605 sqm

View : <https://www.ypa.com.au/7393231>



Tony Talarico
0420 778 401



35 EDGAR STREET RYE

This is an artistic representation. All measurements, dimensions and illustrated areas are approximate. It is the responsibility of all interested parties to verify all data depicted and omitted.