



63 Elizabeth Avenue Capel Sound VIC

3 2 2

YPA Rye rental department is proud to offer this lovely 3 bedroom family home comprising:

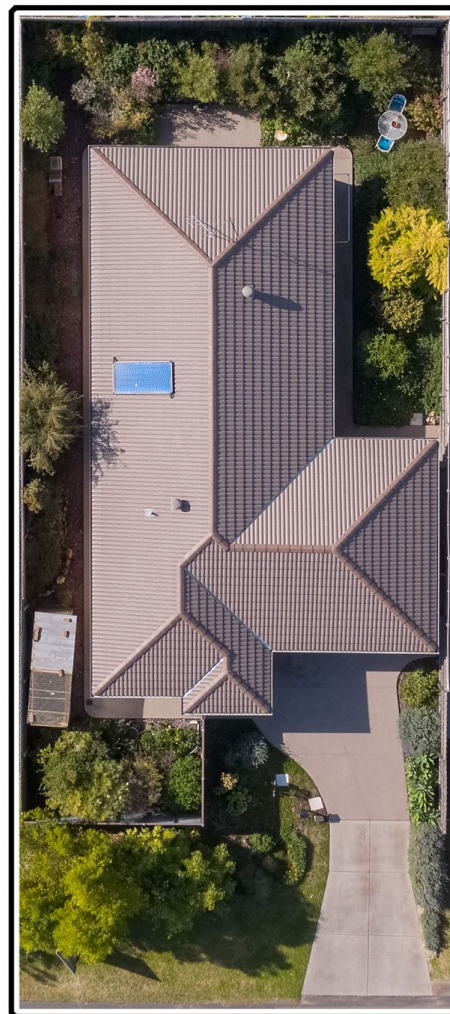
- three bedrooms with built in robes
- ensuite and main bathroom
- open plan kitchen/living/dining
- Electric cooking
- split system heating and cooling
- double lock up garage
- easy to maintain cottage block

!!!!!!Applications will not be accepted if the property has not been viewed!!!!

View : <https://www.ypa.com.au/7393595>



Danielle Hanvin
0415156471



SITE

INTERNAL LIVING AREA
APPROX: 111 SQUARE METERS

GARAGE AND PORCH
APPROX: 37.9 SQUARE METERS

TOTAL AREA
APPROX: 18.3 SQUARE METERS

RESIDENCE

63 ELIZABETH AVE CAPEL SOUND

This is an artistic representation. All measurements, dimensions and illustrated areas are approximate. It is the responsibility of all interested parties to verify all data depicted and omitted.