



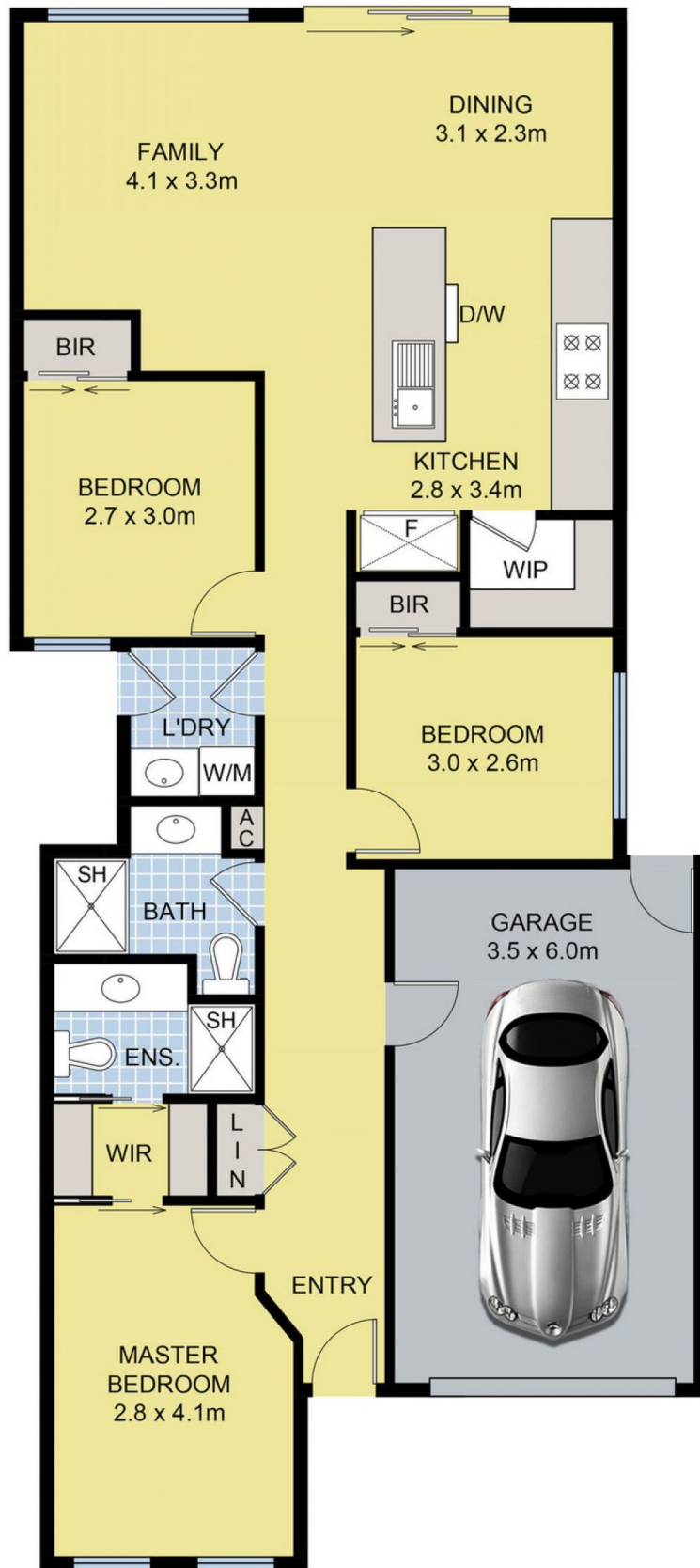
## 4 Goulding Drive FRASER RISE VIC

3 2 1

Just one look, and you will be captured by this truly stylish 6 year old Villa for those seeking a low-maintenance lifestyle or investment surrounded by established infrastructure and all amenities within walking distance, including parks and areas finest shopping strips. Comprising of 3 bedrooms with built in robes, master with ensuite, modern kitchen complete with walk-in pantry, stone benches & dishwasher overlooking meals & living area. Step out to a generous size rear yard deep enough for entertaining. Also includes remote single garage with internal access, gas ducted heating & evaporative cooling. Make no mistake, properties like this wont last long take the opportunity to inspect today.

**Land Size** : 225 sqm

**View** : <https://www.ypa.com.au/7394873>



## 4 Goulding Dr, Plumpton

DISCLAIMER: Floor plan is for marketing purposes and is to be used as a guide only. Measurements are approximate and for illustrative purposes. Interested parties should make and rely on their own enquiries or refer to contract drawings for more accurate information.