



## 2A Orchid Square SYDENHAM VIC

4 2 1

Situated in the most convenient location close to local schools, parklands, public transport and only 10 minute walk to Watergardens Shopping Centre and train station sits this spacious family home!

**Land Size** : 327 sqm

**View** : <https://www.ypa.com.au/7394878>

### Internally featuring:

- 3 bedrooms plus study/optional 4th bedroom
- Massive master bedroom with ensuite & WIR
- 2 full bathrooms
- Separate living areas inc. front lounge & rear family area
- Bright kitchen adjoining meals area
- Ducted heating
- Evaporative cooling
- Porcelain tiles

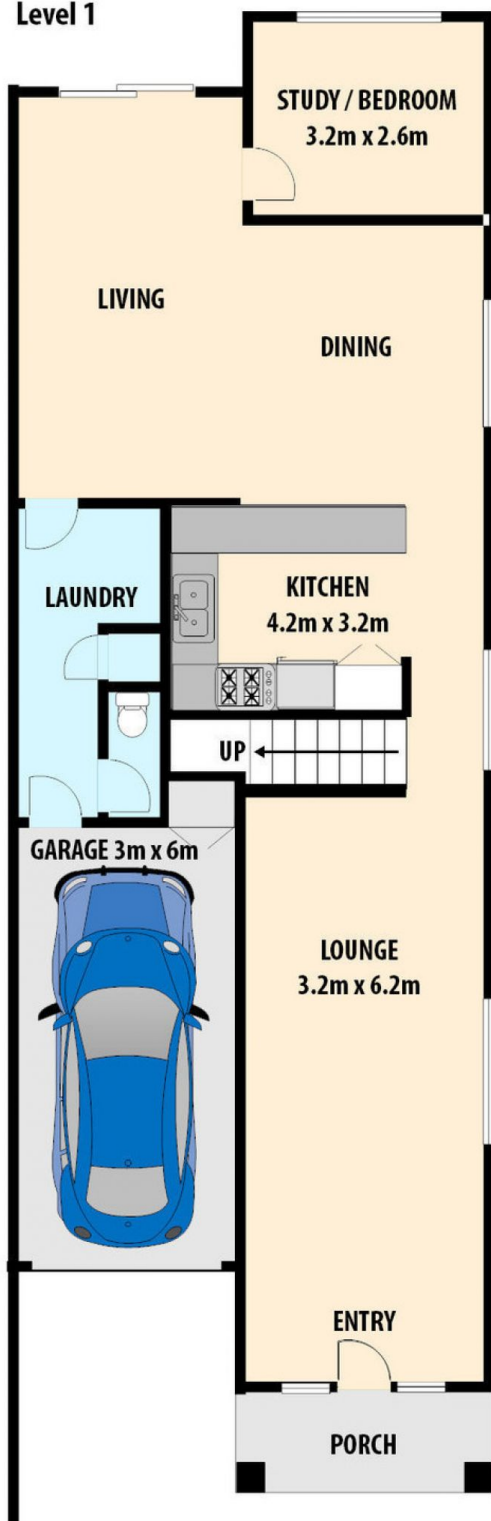


**Kayla Ridolfi**  
0421 866 494

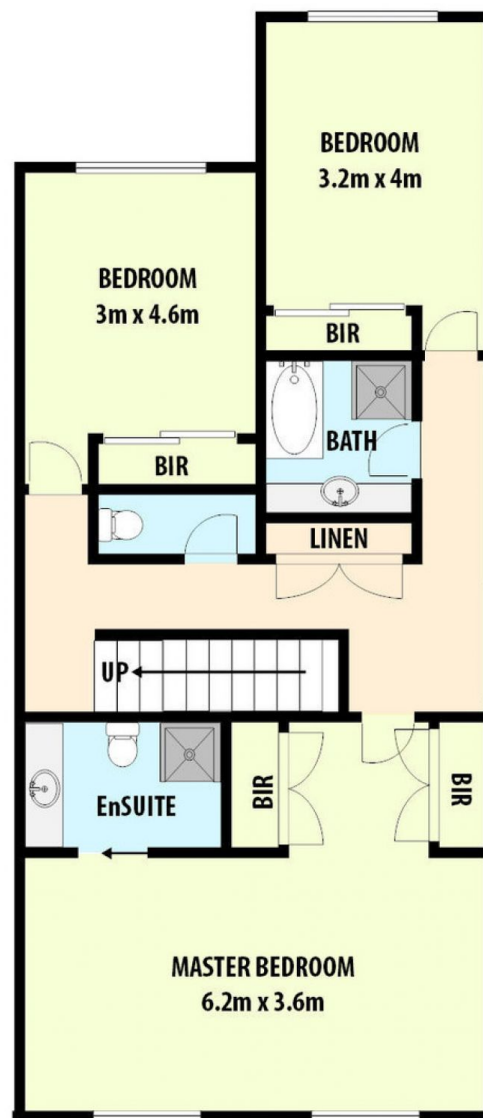
### Externally featuring:

- Single garage with internal access into the laundry

Level 1



Level 2



**2a ORCHID SQUARE, SYDENHAM**

*All data and dimensions shown in this sketch are approximate.*