



32 Manna Street DROMANA VIC

4  2  2 

INSPECT AS ADVERTISED OR FOR APPOINTMENT call / text to mobile Elke on 0423 211 315 or Monica on 0416 255 713 ***Photo ID Required***

Land Size : 717 sqm
View : <https://www.ypa.com.au/7395226>

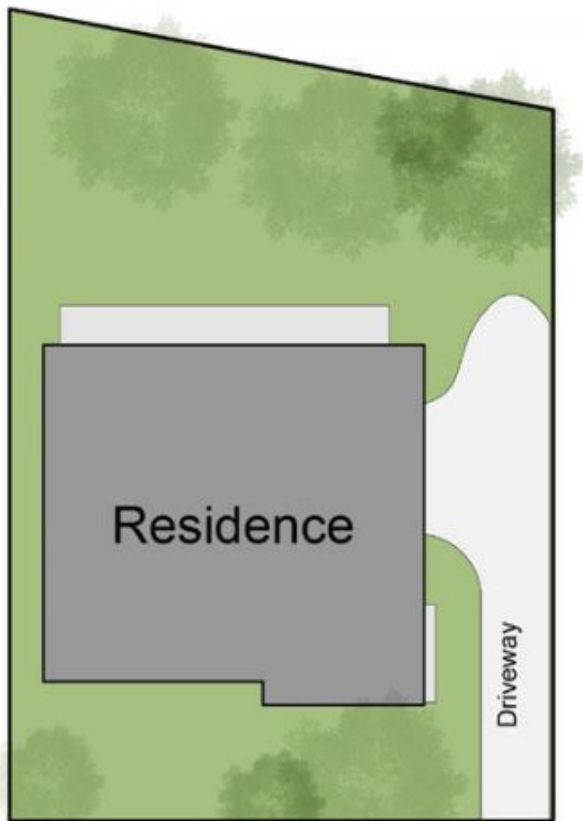
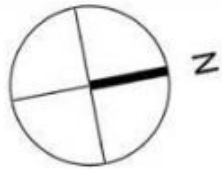
Tucked away up on the hill in Dromana this modern home has a lot to offer, from the funky style to a view that you could not get sick of looking out over Port Phillip Bay at the beautiful silhouette of Melbourne city.

Featuring:

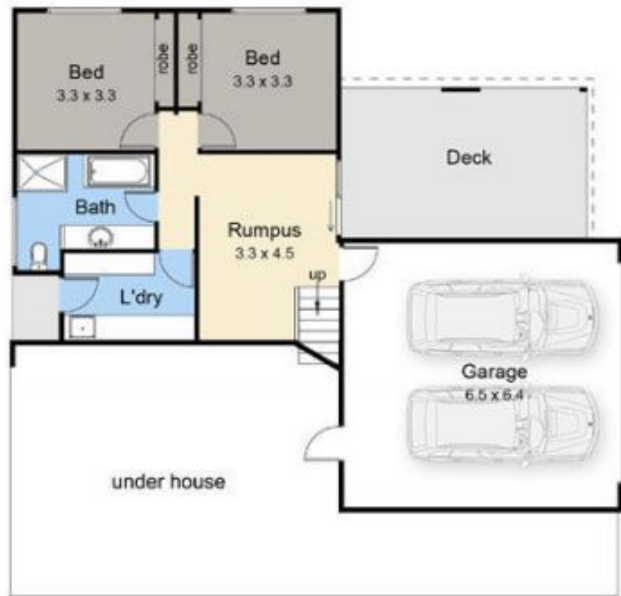
- 4 Generous sized carpeted bedrooms with ample closet space
- Modern style with funky accents
- 2 Generous sized bathrooms
- Generous sized Study Nook perfect for home office
- Amazing views showcasing the beauty of Dromana coastline



Elke Remscheid
0423 211 315



Site Plan



Lower Ground Floor



Ground Floor

32 Manna Street, Dromana

This floorplan is for illustration purposes only and no warranty is given as to its accuracy. Purchasers are advised to carry out their own investigations. Produced by realtywriters (03) 5970 2222