



24 Nestle Court ARTHURS SEAT VIC

4  2  1 

Set high towards the peak of Arthurs Seat, this potential-packed property will both delight and excite. Showcasing unbelievable views of the National Park as it runs down to the sea, you cant help but be dazzled by the aquamarines and blues of Port Phillip Bay.

Land Size : 1266 sqm

View : <https://www.ypa.com.au/7395309>

Featuring:

Nestled on 1226sqm* with a premier vantage point in which to take in the natural land and seascapes

Masses of glass to give you front row seats to the bests views in town

Relish the sights of the ever-changing colours of the bay

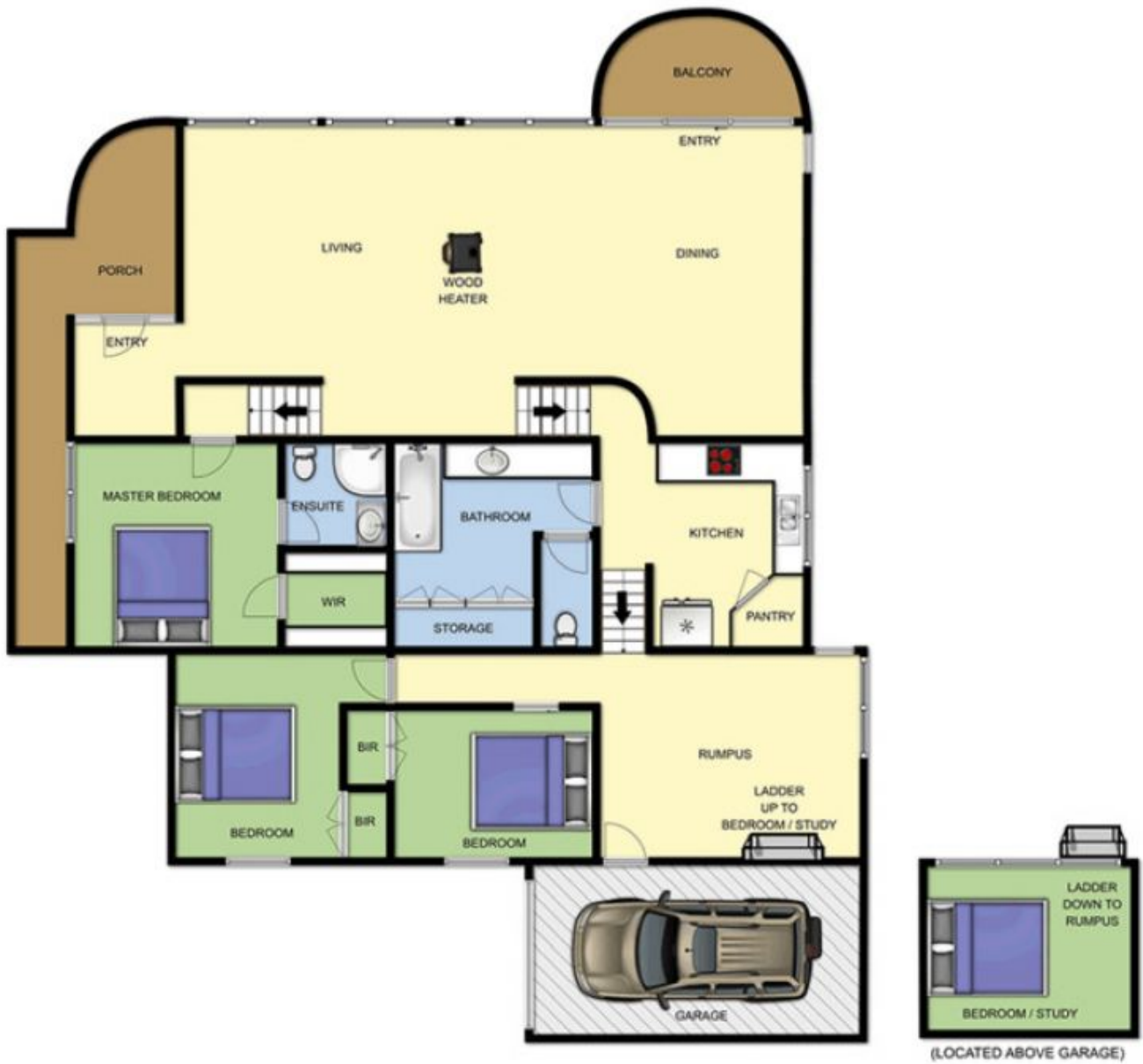
Secluded position fringed by multi-million dollar homes

Unique floor plan that can be tailored to suit your familys needs

Incredible potential to renovate to become a statement



Elke Remscheid
0423 211 315



24 NESTLE COURT ATHURS SEAT

This image is an artistic representation. It is the responsibility of all interested parties to verify all data depicted and omitted.