



**25 Parkes Street MCCRAE VIC**

2  2  3 

Featuring:

One of the BEST views from the wondrous enclave of hillside McCrae

Occupying a commanding position in this coveted pocket  
Affording the fortunate buyer show stopping vistas of the bay and the passing ships

Delight in the ever-changing hues of the water as you cast your eye all the way to the Heads, the You Yangs and the city skyline

Your elevated position grants you viewing access over Sorrento and Blairgowrie to take in the rugged waters of Bass Strait

Absolutely immaculate home which has been treasured and very well-maintained

Charming and inviting set behind a picket fence with a broad viewing deck

**Land Size** : 831 sqm

**View** : <https://www.ypa.com.au/7395323>



**Monica Paige**  
0416 255 713



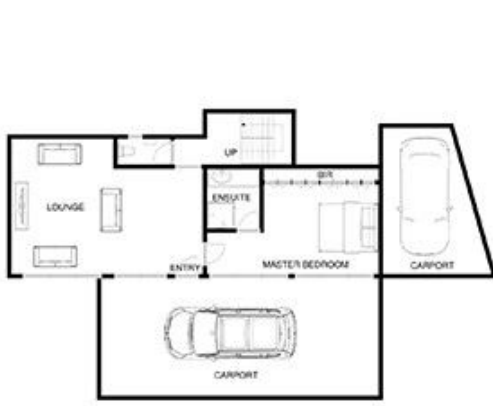
MAIN LEVEL



UPPER LEVEL

# 25 PARKES ST MCCRAE

This image is an artistic representation. It is the responsibility of all interested parties to verify all data depicted and omitted.



MAIN LEVEL



UPPER LEVEL



SITE

## 25 PARKES ST MCCRAE

This image is an artistic representation. It is the responsibility of all interested parties to verify all data depicted and omitted.