



## 46 Hillside Avenue DROMANA VIC

5 2 2

Showcasing incredible vistas of the coastline as it hugs the bay as well the city skyline, this home enjoys an elevated position on the scenic Dromana hillside.

### Featuring:

Sitting on the border of Arthurs Seat State Park where an abundance of flora and fauna flourish

Sweeping views that take in the ever-changing hues of the water, the city lights and the big sky outlook

Deep viewing deck that runs width of the home and is perfectly designed to maximise the stunning aspect

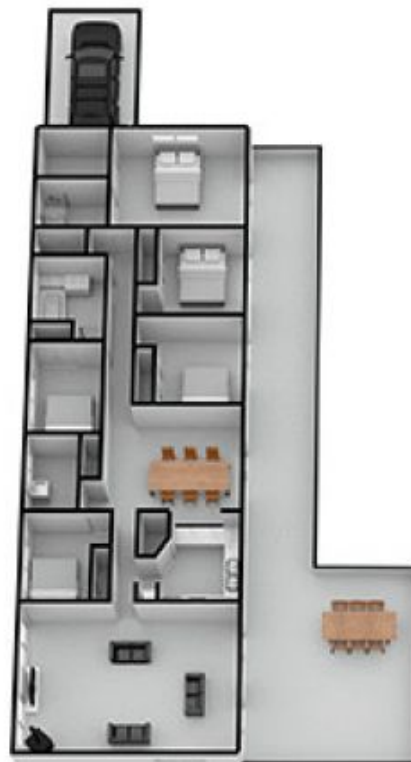
Very well-built, five bedroom home of large proportions with a crackling wood fire, ducted heating and split system heating and cooling

Dual street frontage onto both Raymond Drive and Hillside Avenue

**View :** <https://www.ypa.com.au/7395362>



**Elke Remscheid**  
0423 211 315



MAIN LEVEL



LOWER LEVEL

## 46 HILLSIDE AVE DROMANA

This image is an artistic representation. It is the responsibility of all interested parties to verify all data depicted and omitted.





MAIN LEVEL



LOWER LEVEL



## 46 HILLSIDE AVE DROMANA

This image is an artistic representation. It is the responsibility of all interested parties to verify all data depicted and omitted.