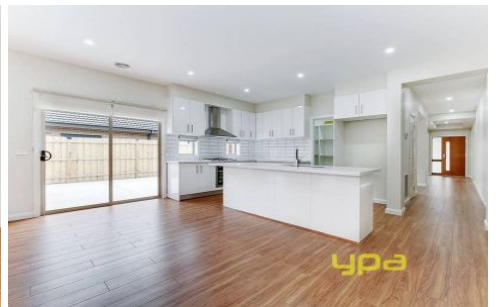


ypa



65 Golflinks Drive BEVERIDGE VIC

4  2  2 

This beautifully presented brand new home will make an immediate impression. Offering 4 generous bedrooms, master with ensuite and WIR, fully equipped kitchen with stainless steel appliances, dishwasher and gorgeous walk in pantry with adjoining spacious family meals area and separate lounge. Complete with all extras such as ducted heating, evaporative cooling, vacuum maid, intercom, stone bench tops, double remote garage with drive through access to rear yard and much more.

Take advantage of the First Home Buyers Grant, approx. 28 sq home sitting on approx. 512m2 land so this will not stay around for long, call Mel Arsic on 0478 112 412 for an inspection.

View : <https://www.ypa.com.au/7395972>