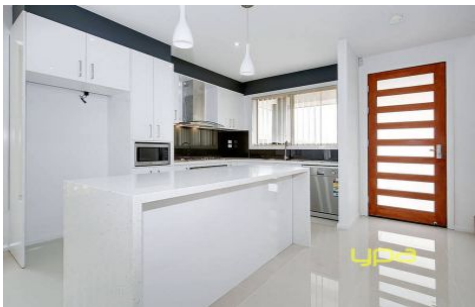


# ypa



**1/19 Brio Drive CRAIGIEBURN VIC**

**4 🛏 2 🚿 1 🚗**

Perfectly positioned in the sort after Aston estate, this newly built establishment is the perfect family home. Comprising of 4 bedrooms, centrally located bathroom, open plan kitchen, meals and living which extends to your outdoor entertaining concrete area at the rear. This double storey home will have you looking no further, as the quality furnishings throughout the home is sure to impress! Located to close amenities such as park lands, Craigieburn Central, local shops and much more. Other features include: stone bench tops, ducted heating, evaporative cooling, 900mm appliances and much more. Call today to inspect, and secure your dream.

**View :** <https://www.ypa.com.au/7396036>