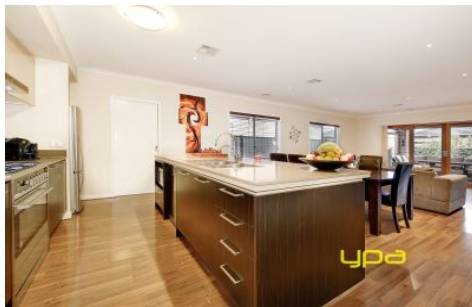


# ypa



**25 Rockwall Drive CRAIGIEBURN VIC**

4  2  2 

Truly an opportunity for the large family to move right in and enjoy years to come in this top quality, near new home! Walk in and be blown away by the space, quality and natural light this home has to offer. Nestled in a quiet pocket in Craigieburn sitting on approx.395m<sup>2</sup>, this perfectly designed home includes features such as refrigerated ducted cooling, solar panels, ducted heating, ample kitchen with stone bench tops, stainless steel dishwasher and a 900mm oven. Its floorplan offers a large family area overlooked by the kitchen, retreat area, a decked alfresco and internal access from its remote controlled garage. Dont miss out!

**View** : <https://www.ypa.com.au/7396145>

**AUCTION SATURDAY 22ND APRIL AT 1:30PM**