



## 5 Masefield Terrace CRAIGIEBURN VIC

4  2  2 

Executive living has never been more appealing than now! Be mesmerised by what this unique home has to offer.

Set amongst other executive homes in the Mount Aitken estate, with easy access to Craigieburn Road, this is an undeniable opportunity to spoil yourself with luxury.

A free-flowing floor plan features high ceilings throughout the home, captures natural light from every angle and is accentuated with downlights, feature lighting.

Enjoy multiple living zones, including a sitting room, theatre room and family room downstairs, as well as a retreat upstairs.

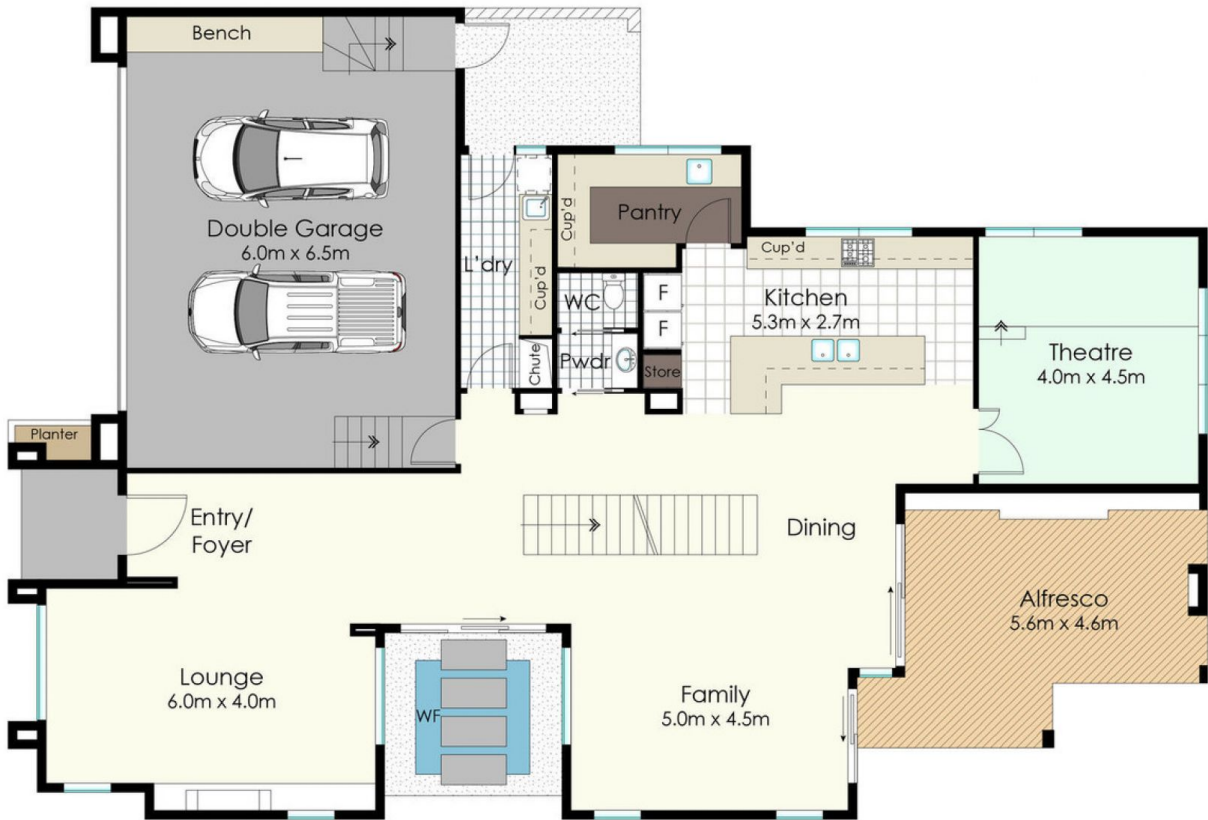
A deluxe master suite offers the perfect space to unwind and escape, boasting an exceptional walk in robe and full ensuite with double vanity with a private balcony which captures everything great Craigieburn has on offer.

Each of the additional three bedrooms are spacious, with walk in robes and a luxurious central bathroom.

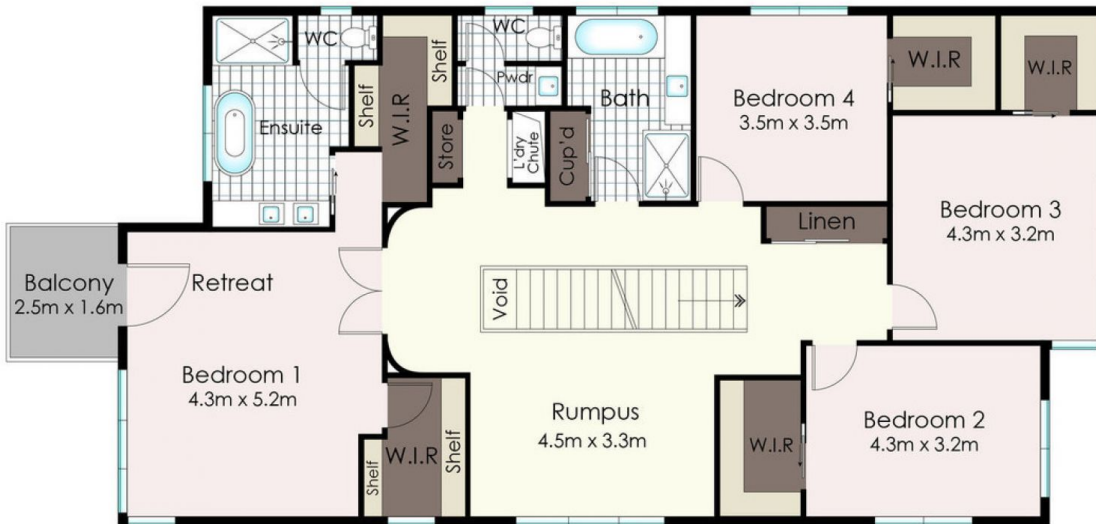
View : <https://www.ypa.com.au/7396417>



**Eddi Bagdadi**  
0432 208 933



**GROUND FLOOR**



**FIRST FLOOR**

**5 Masefield Terrace, Craigieburn**

Disclaimer: Floor plan is for marketing purposes and is to be used as a guide only. Measurements are approximate and for illustrative purposes. Interested parties should make and rely on their own enquiries or refer to contract drawings for more accurate information.