



## 168 Grevillea Street Craigieburn VIC

4 2 2

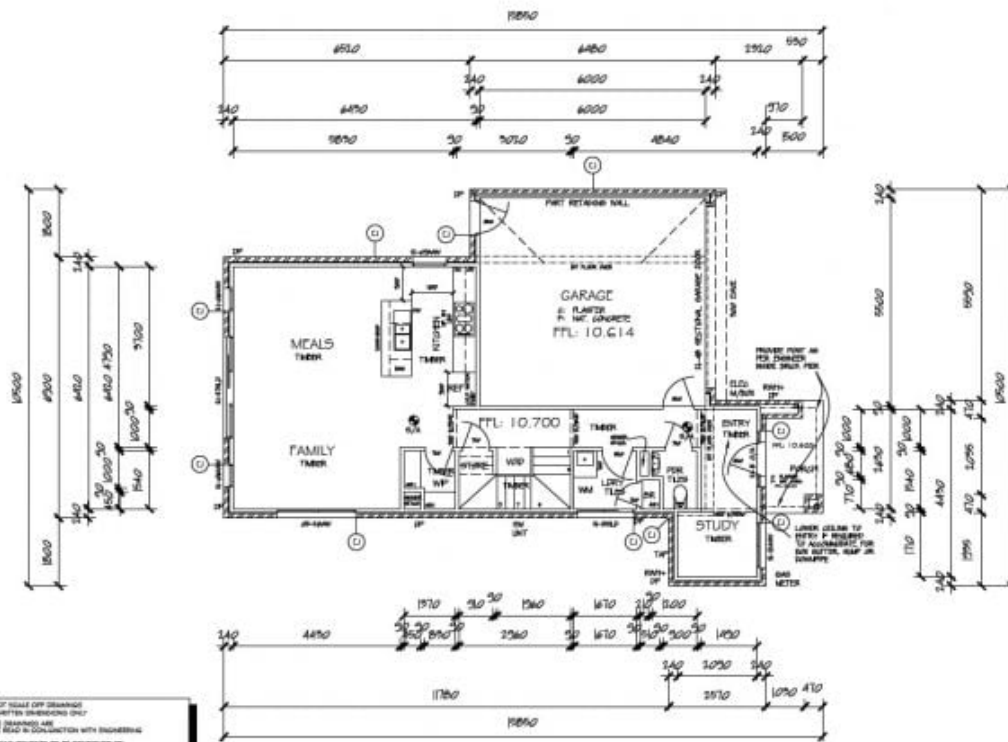
This beautiful family home comprises of:

- Master bedroom with WIR and Ensuite
- Other three bedrooms with BIR'S
- Open kitchen meals area with stone bench and walk in pantry
- 900mm cooktop
- Dishwasher
- Spacious adjoining lounge
- Rumpus room
- Study nook
- Central bathroom
- Powder room
- Evaporative cooling
- Ducted heating
- Intercom
- Under stairs storage
- Intercom

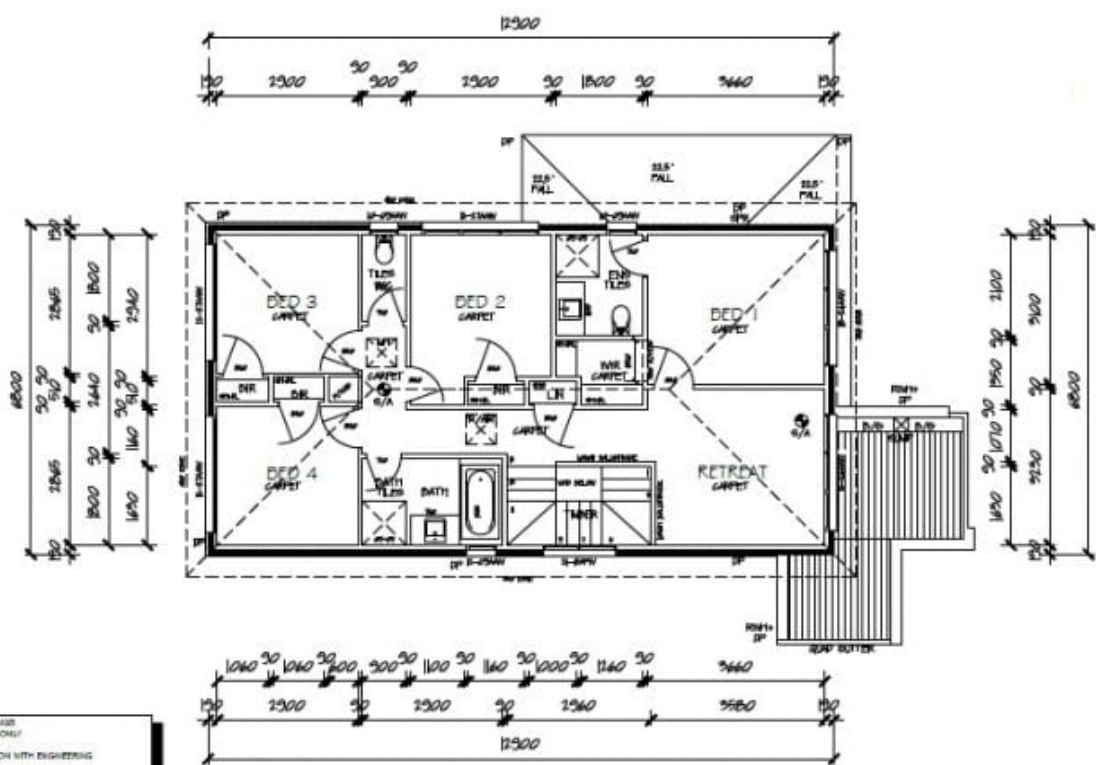
**View :** <https://www.ypa.com.au/7397186>



**Bulent Topcu**  
0424 447 569



- DO NOT SCALE OFF DRAWING
- USE WRITTEN DIMENSIONS ONLY
- THESE DIMENSIONS ARE TO BE READ IN CONJUNCTION WITH ENGINEERING
- ALL MEASUREMENTS TO BE COMPILED ON SITE PRIOR TO CONSTRUCTION



- DO NOT SCALE OFF DRAWING
- USE WRITTEN DIMENSIONS ONLY
- THESE DIMENSIONS ARE TO BE READ IN CONJUNCTION WITH ENGINEERING
- ALL MEASUREMENTS TO BE COMPILED ON SITE PRIOR TO CONSTRUCTION

AREA TABLE	
GROUND FLOOR	73.9m <sup>2</sup>
GARAGE	36.3m <sup>2</sup>
PORCH	4.5m <sup>2</sup>
FIRST FLOOR	87.7m <sup>2</sup>
TOTAL	202.4m <sup>2</sup> (21.8sq)