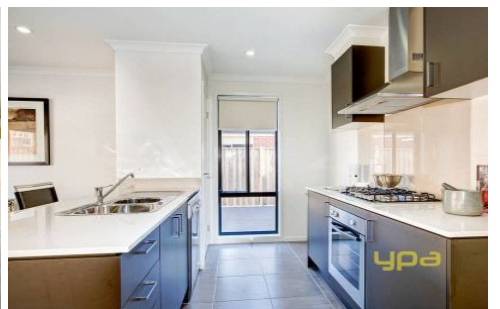
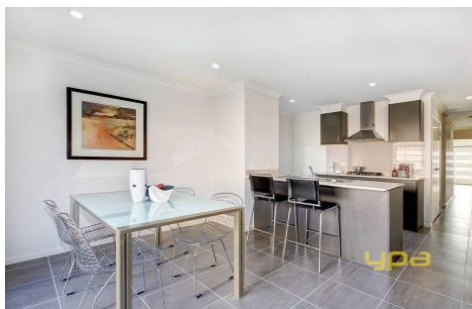
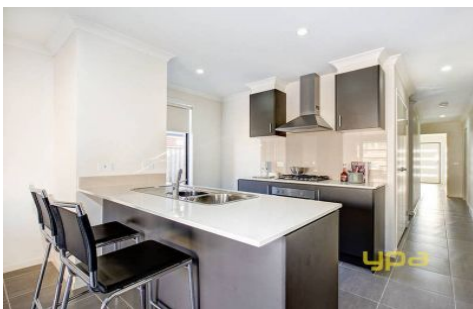


ypa



30 Scarlet Drive GREENVALE VIC

3 2 2

Why bother with all the hassles of building? It's all here and ready to move straight in, with nothing left to do but relax and enjoy. This near-new home offers 3 great sized bedrooms with robes, master with ensuite and walk-in, a lovely sun-filled kitchen with stone bench-tops, a tiled meals area and spacious family room. Outside there's enough room for pets, but with almost zero maintenance. Includes a remote double garage with internal entry and rear access, ducted heating, split system cooling and more. Just one look and you'll want to make it yours!

View : <https://www.ypa.com.au/7397258>



Luke Albioli
0403 700 003