



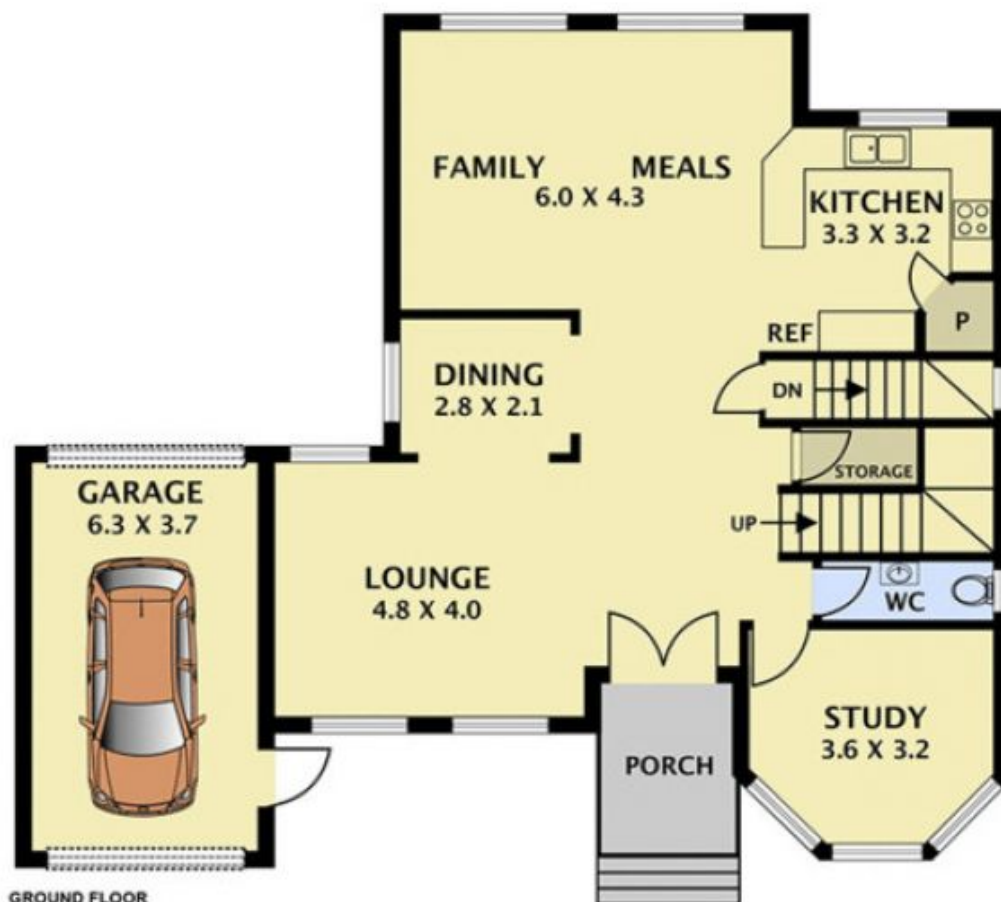
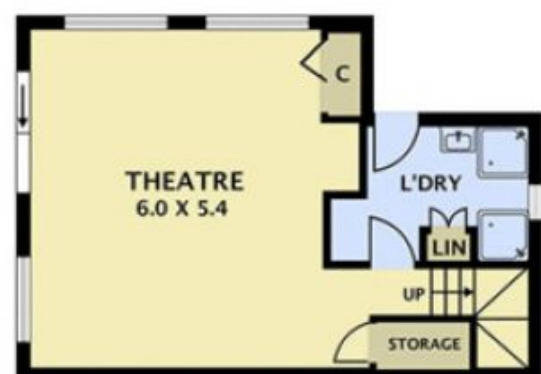
65 Clare Boulevard GREENVALE VIC

4 2 1

Built with quality in mind, this outstanding double storey home set on a generous size allotment of 633m2 approx is perfect for the growing family and will impress! Situated in a great location of the Shannon Rise estate of Greenvale, close to Aitken College and local shops there is no reason why you wont love this home.

View : <https://www.ypa.com.au/7397427>

Complemented with High ceilings, this grand family home offers 4 spacious bedrooms, master with full ensuite, WIR and balcony access, study/games room for the kids, central bathroom with corner spa/bath with separate toilet, light filled kitchen fitted with stainless steel appliances overlooking a generous sized meals/family area, formal lounge and dining, step downstairs to a grand theatre room all set up for those popcorn moments! Head outside and enjoy the brand new decked outdoor BBQ area perfect for all those family occasions and plenty of grassed area for



Disclaimer: Please note plans are indicative only and not drawn to exact scale. All dimensions are approximate. Potential buyers view the property in person.