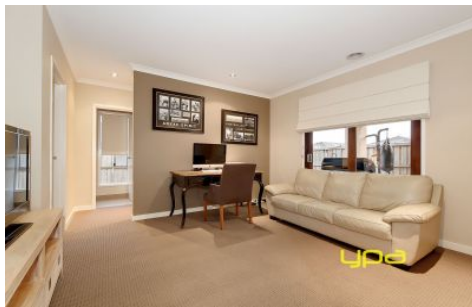


ypa



29 Water Fern Grove GREENVALE VIC

4  2  2 

Just take one look, this gorgeous family home will have you hooked. Offering nothing but the highest of quality fixtures and fittings throughout and a huge list of extras. This 32sq (approx) Home features 4 great sized bedrooms, a KING-SIZED master with walk-in robe and ensuite, an open-plan living area with stunning kitchen (featuring stone stops, SST appliances, dishwasher and double oven) overlooking the meals area and adjoining family room, plus a separate lounge AND a separate kids play area located at the rear. All with access to the outdoor Alfresco area, and more than enough yard for the kids to run around. Includes high ceilings, square-set plastering, beautiful timber flooring, ducted heating, refrigerated cooling, and loads more extras Now, all you need to do is move in and enjoy!

View : <https://www.ypa.com.au/7397460>



Luke Albioli
0403 700 003



