



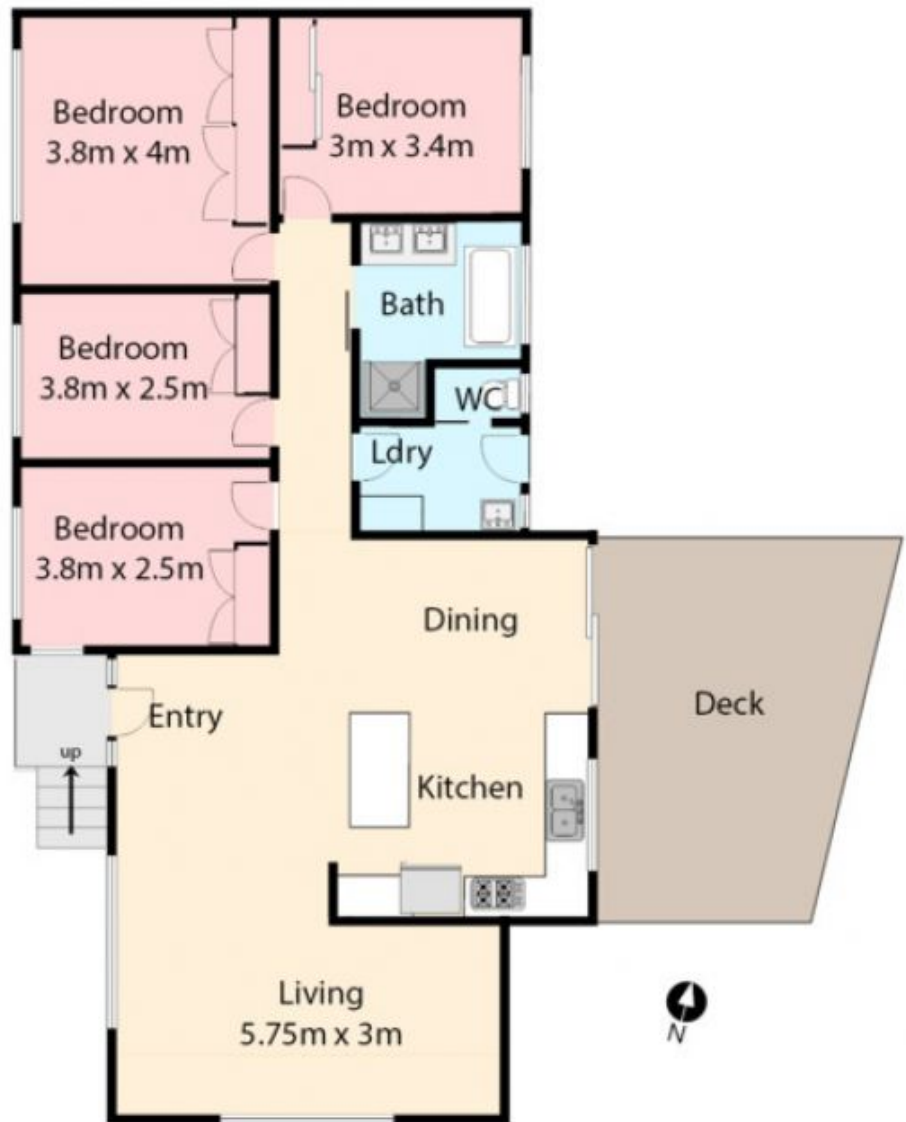
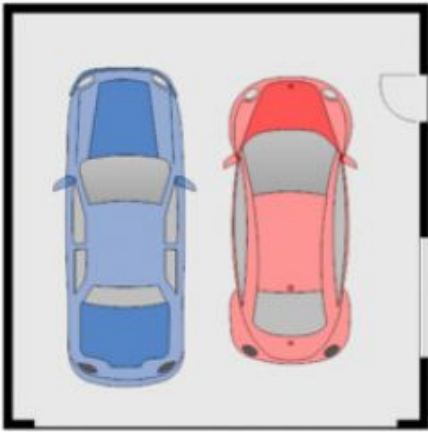
### 3 Wilton Place (Attwood) WESTMEADOWS VIC

4 1 2

This immaculately presented family home has everything you can ask for in a first home. With an updated frontage, established and low maintenance landscaping, this property draws you in from the street, capturing your curiosity and enticing you to have a look inside. As you walk in the front door the first thing you notice is the oversized timber island bench in the kitchen area overlooking the large timber deck with tropical garden. The large open plan kitchen and dining area boasts a new oven and dishwasher along with study nook and four bedrooms all with built in robes as well as fully renovated bathroom with separate toilet and laundry.

All the hard work has been done for you here, with contemporary industrial quality floating flooring underfoot, eco-friendly fluorescent downlights throughout, split system cooling and ducted heating plus extra refrigerated wall unit

**View** : <https://www.ypa.com.au/7397509>



**3 Wilton Place, Attwood**

*All data and dimensions in this sketch are approximate*