



10 Warrego Place TAYLORS LAKES VIC

4 2 2

Timeless sophistication with cutting-edge design is this striking ex-display, Victorian inspired residence, set on a grand 820m2 (approx.) and located in a premium location. Stunningly executed, with a range of features and finishes from vaulted, high & angled ceilings, to decorative rosettes, cornices and arches, altogether superbly compliment the appeal of the home. Expansive and opulent, the homes emphasis is on the fantastic multiple living areas, together with the manicured gardens.

4 bedroom family residence, (master with his/hers robes, large ensuite with corner shower and spa bath) including a large loft style bedroom upstairs.

Spacious upstairs living with separate storage room.

Timber kitchen, cleverly situated, branching to all the living areas, fitted with double wall oven, cooktop & dishwasher.

Complementing the formal lounge is a welcoming fireplace, alongside a formal dining area.

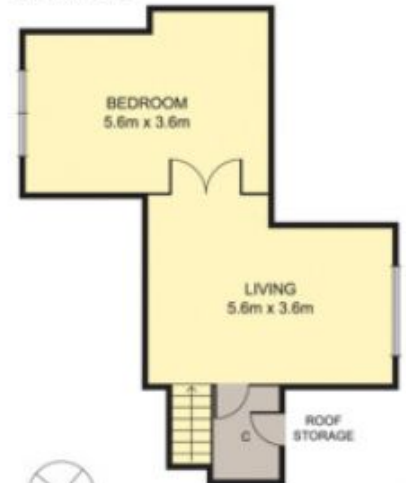
View : <https://www.ypa.com.au/7397546>



Luke Albioli
0403 700 003



UPPER LEVEL



Disclaimer: Please note plans are indicative only and not drawn to exact scale. All dimensions are approximate. Potential buyers should satisfy themselves of any pertinent matters.