



1/26 Campbell Street WESTMEADOWS VIC

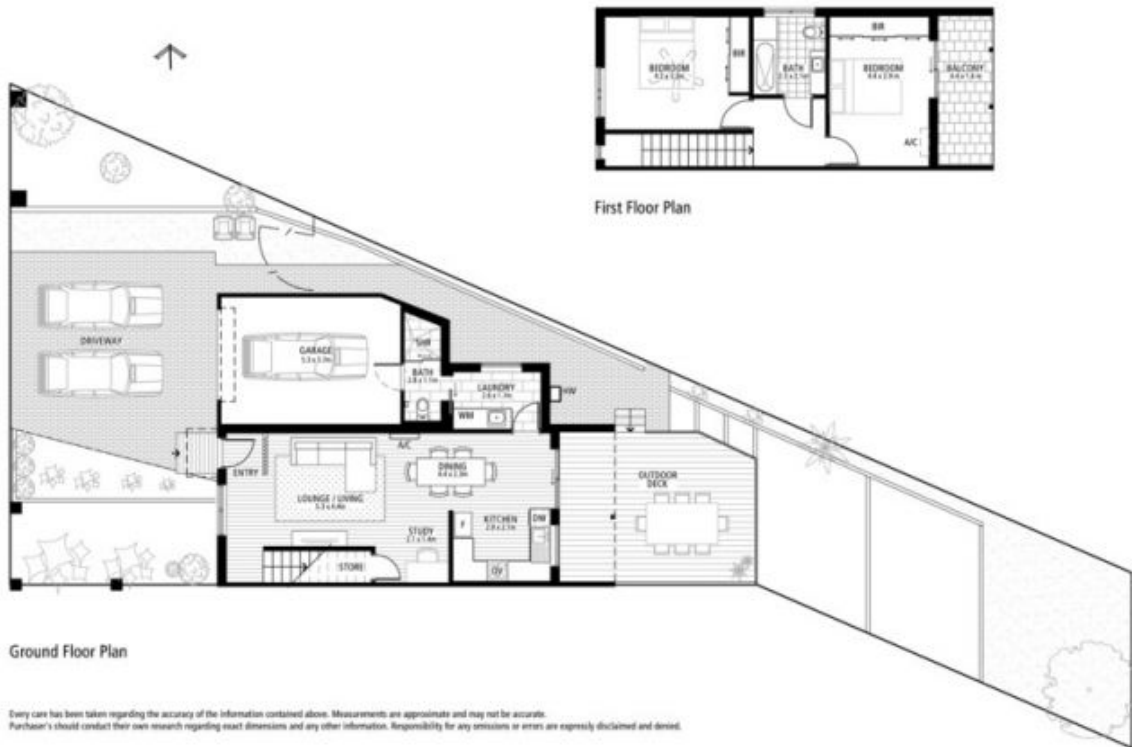
2  2  1 

You'd be on the right track if you thought these pictures were straight out of a designer home magazine. This charmingly renovated townhouse boasts exposed brickwork, wood paneling, and polished hardwood floors teamed with contemporary textured finishes. Stunning views of the Moonee Ponds Creek Trail are visible from the upstairs balcony and the beautiful outdoor entertaining deck. A prime example of a move-in ready, low maintenance townhouse - the perfect entry point into the market today.

Land Size : 275 sqm
View : <https://www.ypa.com.au/7397680>

Featuring;

- Two bedrooms with full-height built-in in robes
- Open plan kitchen, living and dining area
- Master bedroom with private balcony
- Kitchen with stainless steel appliances, dishwasher and stone benchtops



Ground Floor Plan

First Floor Plan

Every care has been taken regarding the accuracy of the information contained above. Measurements are approximate and may not be accurate. Purchaser's should conduct their own research regarding exact dimensions and any other information. Responsibility for any omissions or errors are expressly disclaimed and denied.