



9/107-109 Mickleham Road TULLAMARINE VIC

2  **1**  **1** 

Look no further this newly renovated single level villa is a must see for first home buyers or investors. Two double bedrooms (both with BIRs), central bathroom and separate WC, spacious living room leading through to the kitchen/meals area.

Features include gas heating, split-system air conditioning, infinity hot water system, full-size laundry & rear access into the lock-up garage.

Bus stop 70m walk

Tullamarine shops 600m walk

Gladstone Park shops 1km walk

Westfield Shopping Centre 3.2km Drive

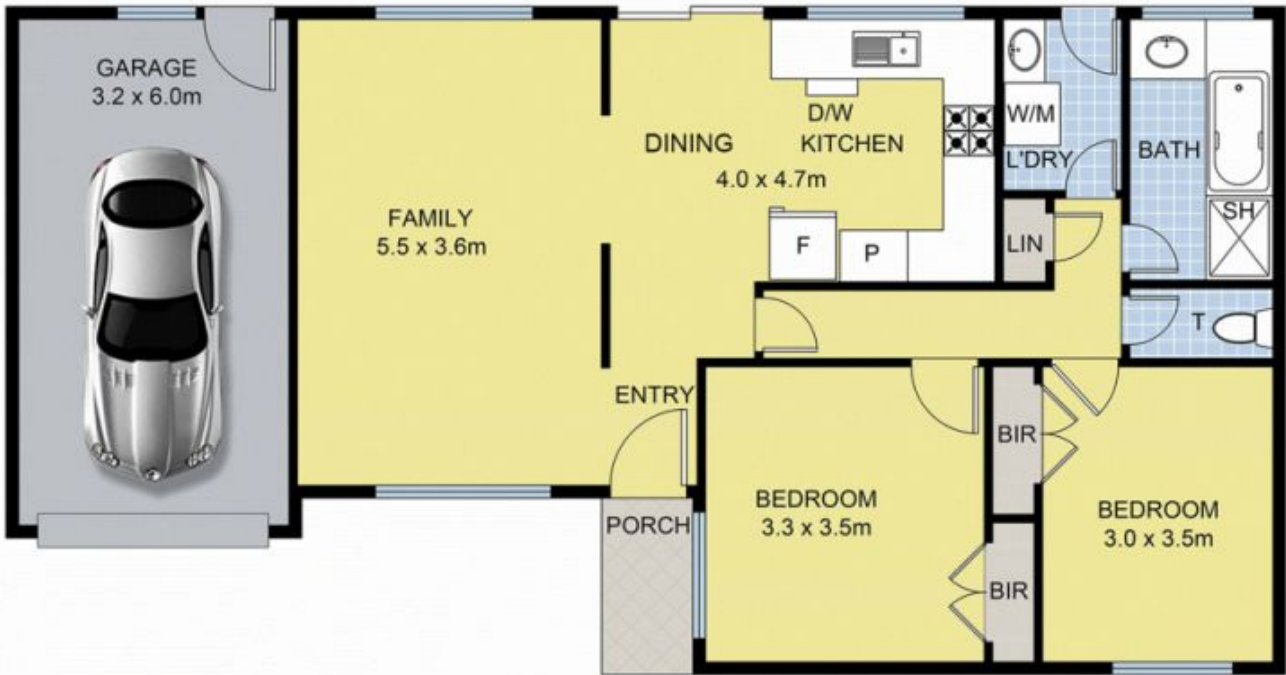
In school zone for Tullamarine Primary, Gladstone Park Primary & Secondary.

View : <https://www.ypa.com.au/7397682>



Luke Albioli
0403 700 003

PHOTO ID REQUIRED AT INSPECTIONS.



9 / 107-109 Mickleham Rd, Tullamarine