



26 Samara Grove GLADSTONE PARK VIC

3 2 1

With a charming facade, this contemporary move in ready home in one of the best locations in Gladstone Park is the perfect opportunity for a first home buyer or investor. Three-bedroom, two-bathroom homes in Gladstone Park are rare and don't come up often so take advantage of this well positioned property only minutes from bus stops, Gladstone Park Shopping Centre and local schools.

Featuring;

Large master bedroom with walk in robe and ensuite

All bedrooms with built in storage

Split level living spaces with study nook running off the main living area

Kitchen featuring white two pack cupboards, stainless steel wall oven and dishwasher

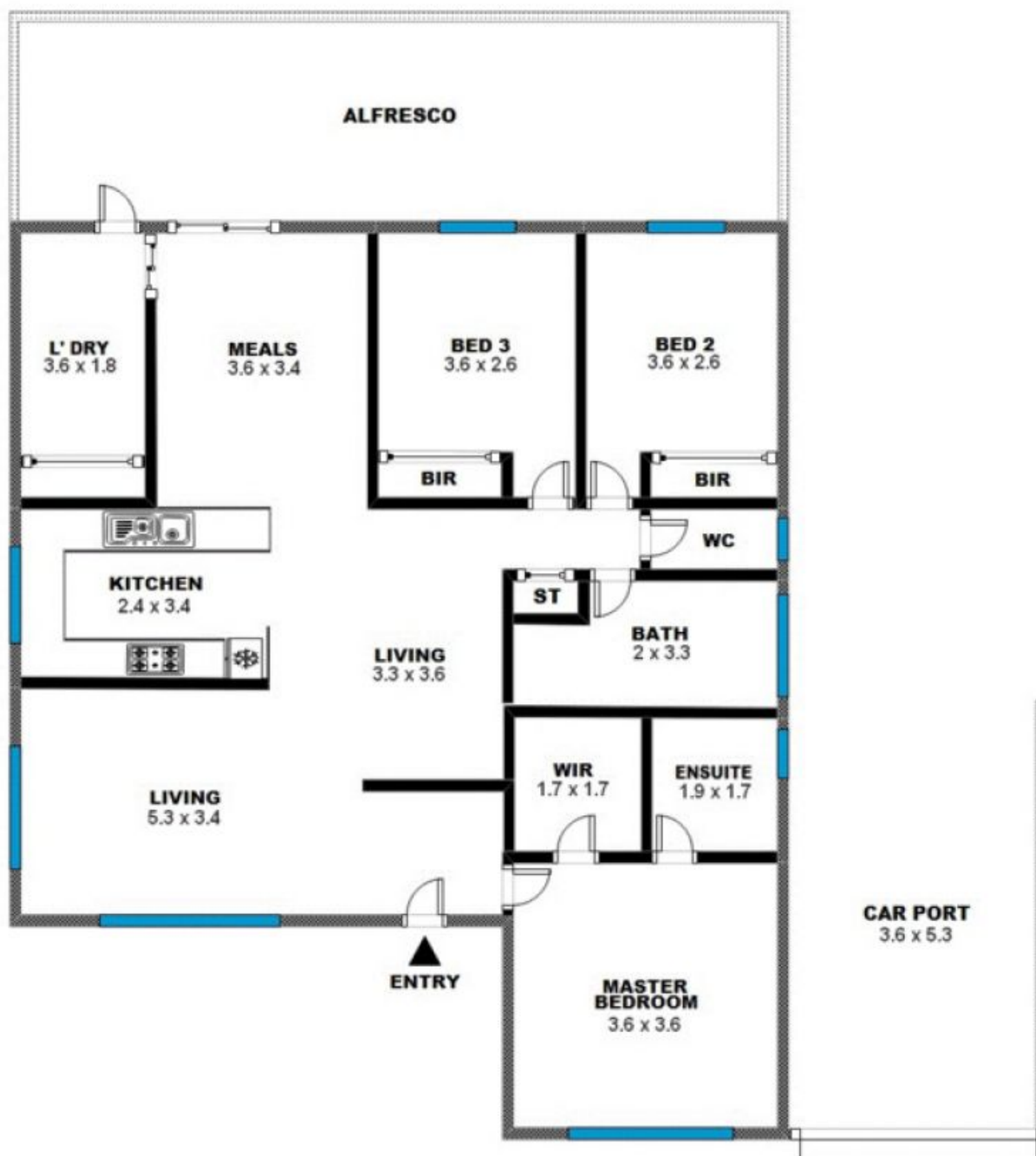
Main bathroom with separate large shower and bath

Outdoor alfresco area overlooking grassed backyard with tool shed in back corner

Land Size : 543 sqm

View : <https://www.ypa.com.au/7397699>

26 SAMARA GROVE, GLADSTONE PARK VICTORIA 3043



Whilst every attempt has been made to ensure the accuracy of the floor plan contained here, measurements of doors, windows, rooms and any other items are approximate and no responsibility is taken for any error, omissions, or mis-statement. This plan is for illustrative purposes only and should be used as such by any prospective purchaser.