



8 Endeavour Crescent WESTMEADOWS VIC

5 3 2

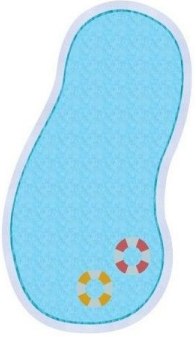
Bursting with street appeal and offering loads of space for the whole family, this great looking home will get your heart racing. Features 5 bedrooms plus study, master with ensuite, big lounge and dining, timber kitchen with generous meals area and central bathroom. Downstairs you'll find a HUGE rumpus (the ideal man-cave! - The perfect getaway for any bloke or teenager looking for their own space) plus adjoining gym/recreational area, laundry and internal access from the big double (remote) garage. Outside you'll find two separate entertaining areas, neatly established gardens, a well kept in-ground pool and side access for a boat or trailer. All this includes ducted heating, air-con, gas-log heaters, roller shutters, updated (SST) kitchen appliances (inc dishwasher) and loads more. Located in a sought-after pocket of the area, with views and character. It's the perfect upgrade for your family, everyone will agree!

Price : \$ 790,000
Land Size : 640 sqm
View : <https://www.ypa.com.au/7397710>

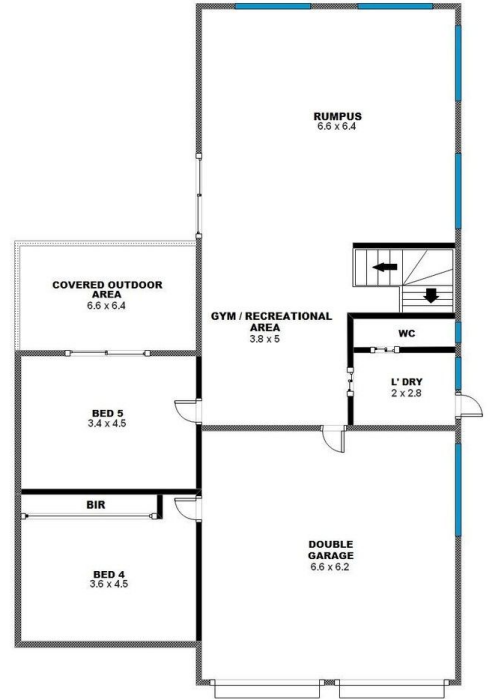


Luke Albioli
0403 700 003

**8 ENDEAVOUR CRESCENT, WESTMEADOWS
VICTORIA 3049**



GROUND LEVEL



LOWER GROUND LEVEL