

137 Elevation Boulevard CRAIGIEBURN VIC

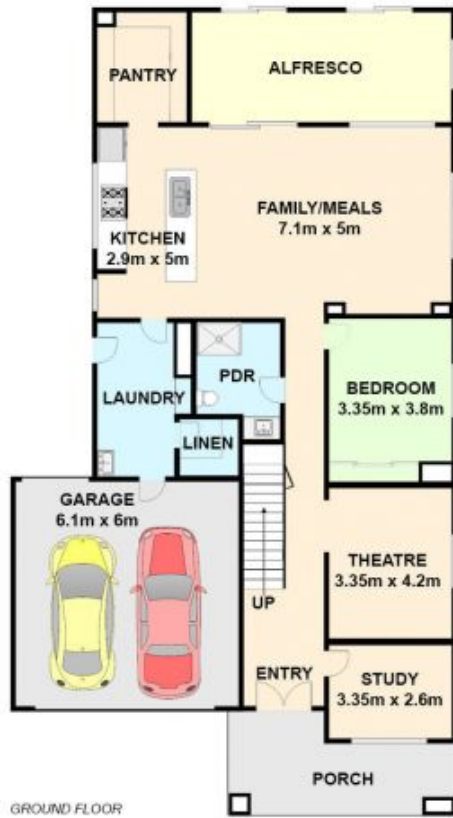
5  3  2 

A contemporary designed home with a towering street presence, set in a tranquil street and surrounded by an abundance of beautiful parklands. For the kids, Aston Traffic Park, equipped with safety rules circuit for bikes/scooters at your doorstep, alongside Aitken Hill Primary School ideally located within walking distance and upcoming Craigieburn South Secondary School on Debonair Parade to be completed early 2020 as well as a future town centre around the corner on Vantage Boulevard.

This impressive 40sqs (approx..) home where the interior is flooded with natural light is the ideal lifestyle to raise a family, showcasing endless living areas where you cant help but be drawn to the grand open plan area with neutral colour tones, enhancing the stunning outlook of this residence.

The floor plan delivers 5 grand bedrooms, consisting of a

View : <https://www.ypa.com.au/7397716>



GROUND FLOOR



UPPER FLOOR

137 ELEVATION BOULEVARD, CRAIGIEBURN
 All data and dimensions shown in this sketch are approximate