



7 Valley Park Boulevard WESTMEADOWS VIC

3  2  2 

A Great Way to Start!

This display home which has never been occupied offers 3 bedrooms, master with ensuite, central bathroom, a large open plan living zone with great looking kitchen, big meals and family area plus a powder room and laundry. Includes a double (remote) garage with internal access, timber flooring throughout, ducted heating, split system, SST appliances (inc dishwasher), upgraded inclusions and fittings plus loads more. Dont let this opportunity pass you by!

View : <https://www.ypa.com.au/7397756>



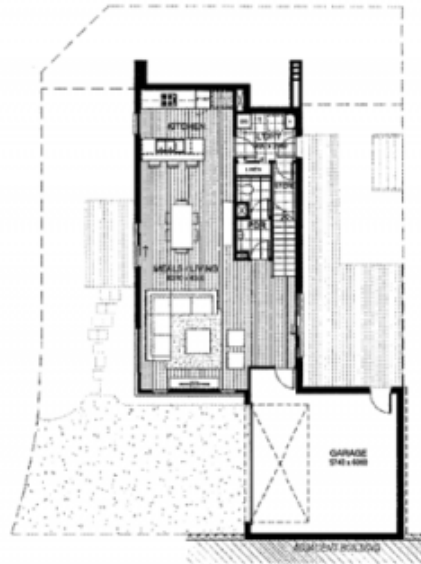
Luke Albioli
0403 700 003

LANATA

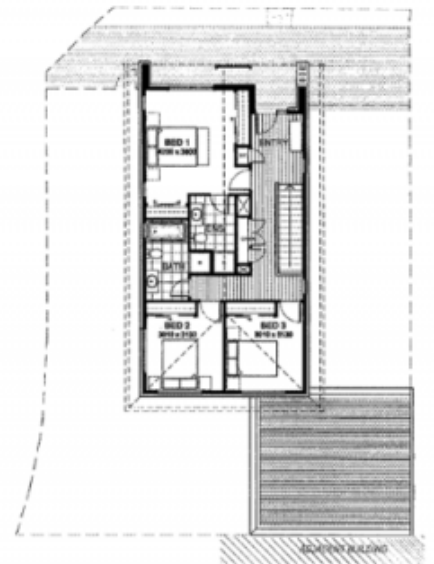
The 3 bedroom Lanata is cleverly built around an impressive wide open ground floor design. This large area easily accommodates a modern and well-appointed kitchen-meals-living area with plenty of space left over for you to add your own touch with a display cabinet or feature shelving. Upstairs the bedrooms are generously sized and the master bedroom features his and hers wardrobes and a private ensuite.

LANATA FIXTURES AND FITTINGS

- 600mm stainless steel oven, cook top and rangehood
- Silver finish dishwasher
- **Upgraded** glass kitchen splashback
- **Upgraded** 40mm reconstituted stone kitchen bench top
- Floor coverings: carpet and tiles where nominated
- **Upgraded** timber veneer staircase and flooring where nominated
- **Upgraded** elegant pendant lights to meals area, above island bench and in master bedroom



GROUND FLOOR



FIRST FLOOR

- Gas ducted heating
- Remote control-operated double garage
- Front landscaping, driveway, letterbox, clothesline
- **Upgraded** rear deck and landscaping
- Super-fast optic fibre connection providing free to air TV, and the ability to connect phone, Internet and pay TV services
- **Upgraded** Technology Pack featuring thermostat, alarm system, video intercom and wall mounted iPad charging bracket, all controllable wirelessly via the included iPad or your smart phone no matter where you are*