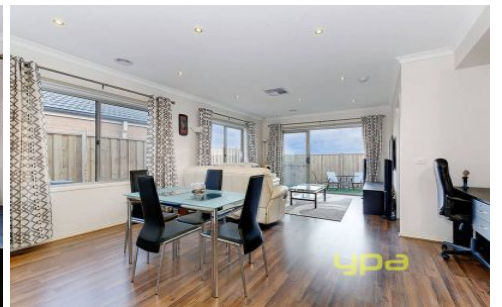
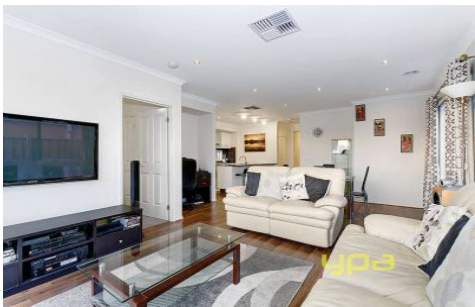


# ypa



**32 Silverwood Drive GREENVALE VIC**

3  2  1 

Offering three bedrooms, master with WIR and ensuite, central bathroom, kitchen with modern window-splashback and stone bench-tops, separate meals area and lounge/family room. Outside youve got a very low maintenance yard and the bonus of stunning views right there over your back fence! Includes gorgeous timber flooring throughout, remote garage (with internal access), ducted heating, evap-cooling and loads more.

**View :** <https://www.ypa.com.au/7398296>