



## 35 Corbet Street Weir Views VIC

4 3 1

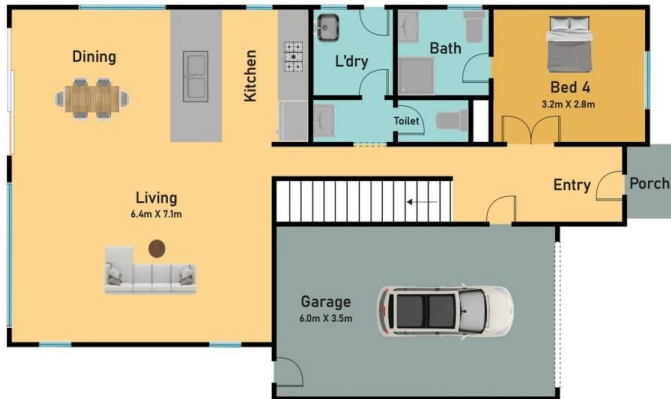
This stunning residence embraces contemporary design with a succession of light filled living spaces and a superior level of presentation.

**View :** <https://www.ypa.com.au/7398333>

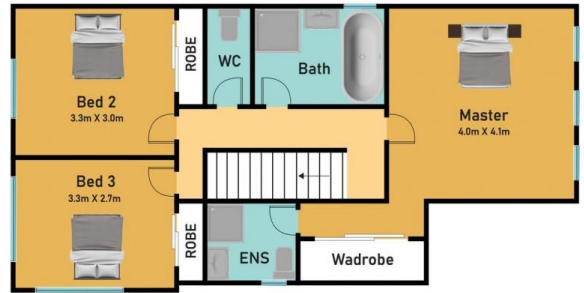
Comprising of the following:

- ? Four spacious bedrooms, master with en-suite and a walk-in robe
- ? Two en-suite
- ? Three bedrooms with built in robe
- ? Four Toilets
- ? Open plan kitchen which includes 600mm stainless steel appliances, gas cook top, range hood and dishwasher
- ? Large open plan meals and family area
- ? Spacious backyard with natural grass is ideal for family with kids and pets
- ? Added extras include gas ducted heating and split

### Ground Floor



### First Floor



### 35 Corbett St, Melton South

\*Whilst every attempt has been made to ensure the accuracy of the floor plan contained here, measurements of doors, windows, rooms and any other items are approximate and no responsibility is taken for any error, omission or mis-statement. This plan is for illustrative purpose only and should be used as such by any prospective purchaser. The services, systems and appliances shown have not been tested and no guarantee as to their operability or efficiency can be given.