



## 5 Campbell Court BROOKFIELD VIC

4 2 6

In this sought after locale of prestigious homes with peace and quiet, thanks to the big one acre plus properties all around. A dream escape from the 'burbs awaits, with this perfect family residence secluded on 4000m2(approx.) that you'll instantly want to call your home. Breathtaking front gardens line the driveway that leads to a single level family home, with two separate living zones that integrate with outdoor living. Hosting four generous bedrooms all with built in robes, and master with walk in robe and ensuite. An entertainer's haven is how you'd describe the home - and so will your friends who'll be inviting themselves over for summer night BBQs. Family living and the light-filled dining both step out effortlessly onto a sensational decked entertaining area. Further luxury inclusions: hostess kitchen with ample cupboards and bench space, dishwasher, ducted heating, evaporative cooling, ceiling fans, 20,000 litres of water storage, double lock up carport, 2 large sheds

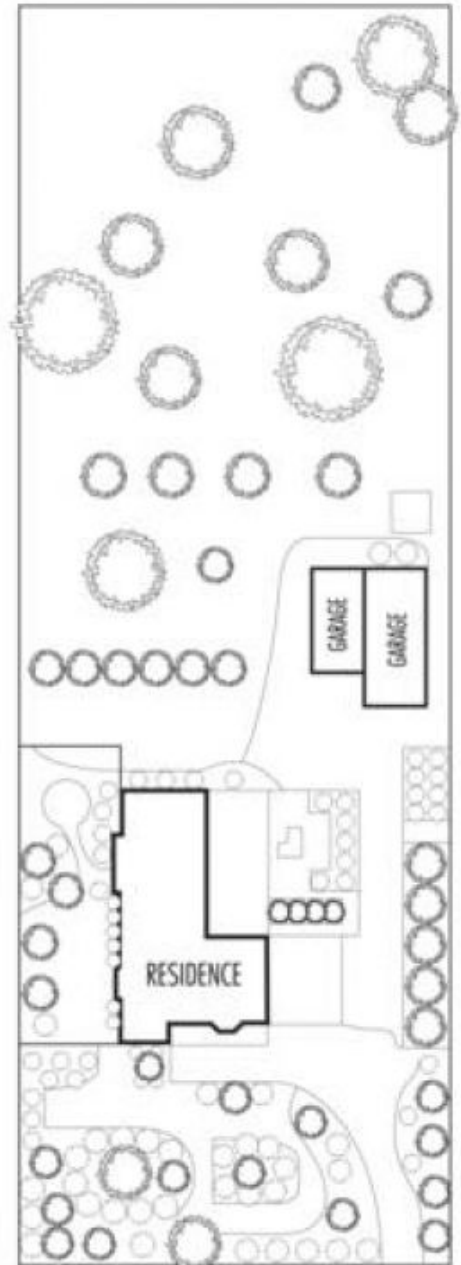
**View :** <https://www.ypa.com.au/7398852>



**Vickie Ramon**  
0403 194 621



1m 2m 3m



Disclaimer: Please note plans are indicative only and not drawn to exact scale. All dimensions are approximate. Potential buyers should view the property in person.