



14A Djerriwarrh Court KURUNJANG VIC

4 2 4

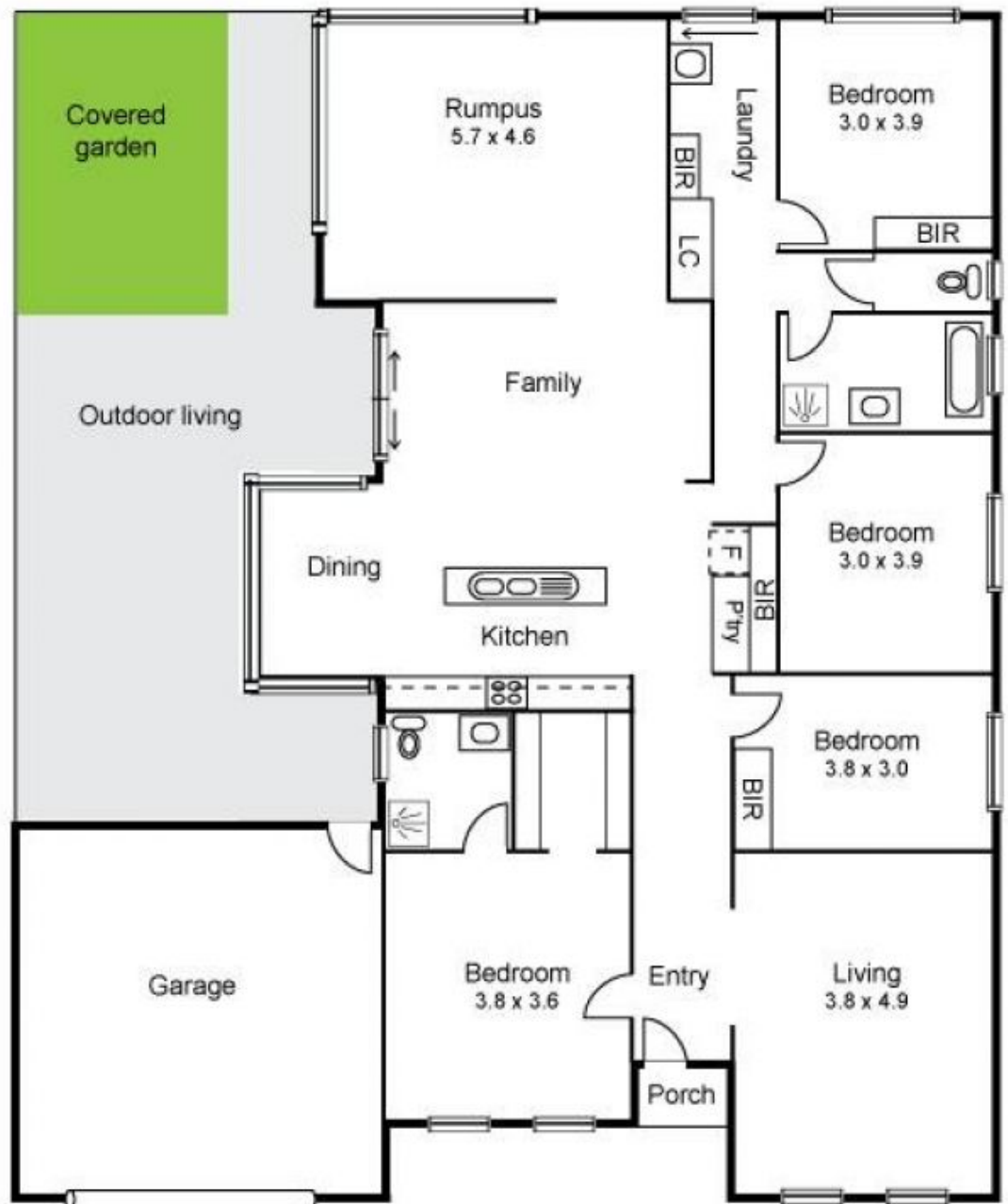
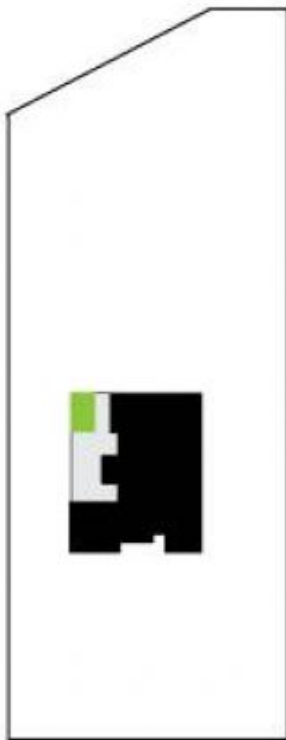
Set in the desirable Toolern Downs Estate this perfectly maintained private family residence has been designed with lifestyle and entertaining in mind. Set upon a vast 4665m² (approx.) with instant street appeal you're greeted with a grand circular driveway and private country style gardens for one lucky buyer to truly call home. Featuring 3 living spaces, 4 spacious bedrooms including master bedroom that's located at the front of the property and equipped with large en-suite. The designer layout features a huge kitchen with quality appliances, overlooking the rear yard and the family/meals zone. Internal extras include gas ducted heating, evaporative air conditioning, alarm, high ceilings, extra windows for natural light, linen cupboards and much more. Outside you will find the convenience of remote double lock up garage, multiple shedding, enough room for the kids or pets to run around and exceptionally large undercover entertaining area perfect for summer!

Land Size : 4704 sqm
View : <https://www.ypa.com.au/7398885>



Vickie Ramon
0403 194 621

Kurunjang
14a Djerriwarrh Ct



Whilst every precaution has been taken to ensure the accuracy of the above information prospective buyers are advised to make their own enquiries