



4 Golden Wattle Way MELTON WEST VIC

4 2 2

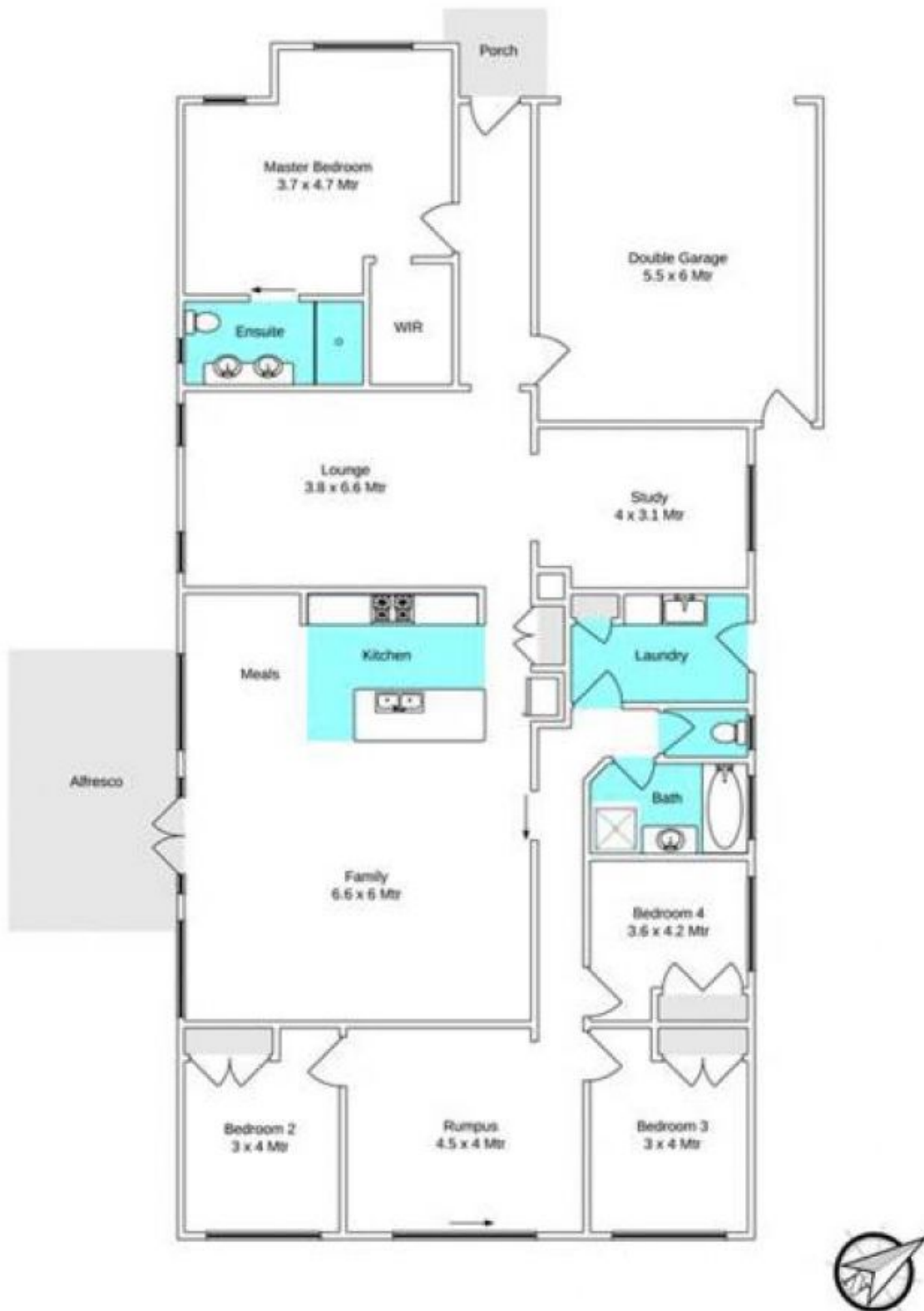
With an abundance of natural light, spacious living and ample accommodation, this outstanding residence offers plenty of room for the growing family. From the moment you step inside you will appreciate the flexible floor plan that allows the family to interact yet provides space for those who appreciate their privacy. Perfect for those who like to entertain complete with stunning Under cover alfresco area and all on a low maintenance block for you to complete . Comprising of ducted heating, evaporative cooling, formal lounge, oversized study ,large modern kitchen with Stainless steel appliances and large meals area, master with full ensuite and walk in robe, double garage with side access on both sides of the home . Positioned in a friendly quiet and secure child-safe area this home really is the complete package. Don't let this opportunity pass you by.

Land Size : 790 sqm
View : <https://www.ypa.com.au/7398901>



Shane Spiteri
0488 980 115

4 Golden Wattle Way, Melton West



Whilst every precaution has been taken to establish the accuracy of the above information, Prospective buyers are advised to make their own enquiries.