



6 Triandra Court MADDINGLEY VIC

4  2  2 

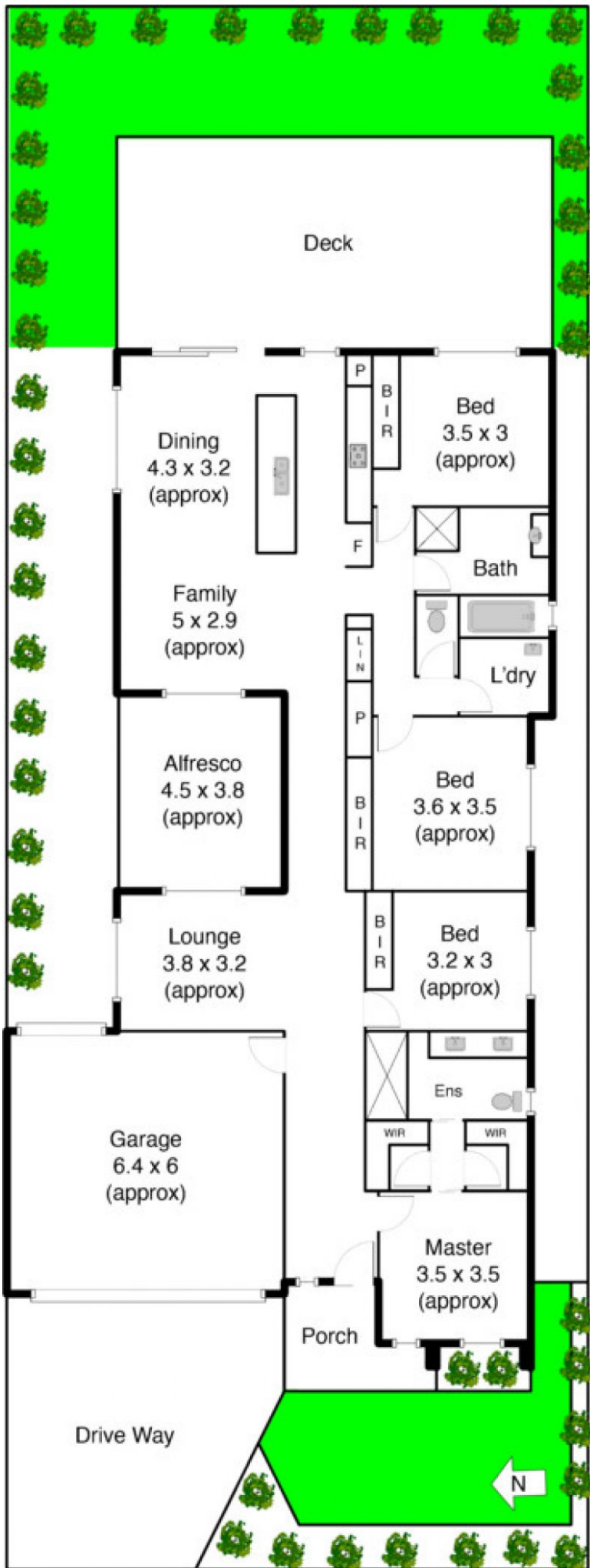
This is living at its very best! With one of the only court locations and walking tracks and children's playground at your front door, this family home sits on the edge of everything great about the stunning Stonehill estate. Contemporary family residence, grand entrance, quality fixtures and fittings throughout set the high standards to this modern day classic. Comprising: 4 double bedrooms with BIR (master boasting his and hers WIR and ensuite), formal lounge room, spacious open plan living and dining area overlooked by a sleek kitchen complete with breakfast bar and stone bench tops and stainless steel appliances. Sliding doors seamlessly combine the inside without revealing a huge stunning entertainer's alfresco area and huge decking area great for all year entertaining. Additional features include: ducted heating, evaporative cooling, ample storage, double remote garage with drive through access and fully landscaped garden surrounds. Appreciate

Land Size : 515 sqm

View : <https://www.ypa.com.au/7398963>



Shane Spiteri
0488 980 115



Triandra Ct