



28 Gretel Grove MELTON VIC

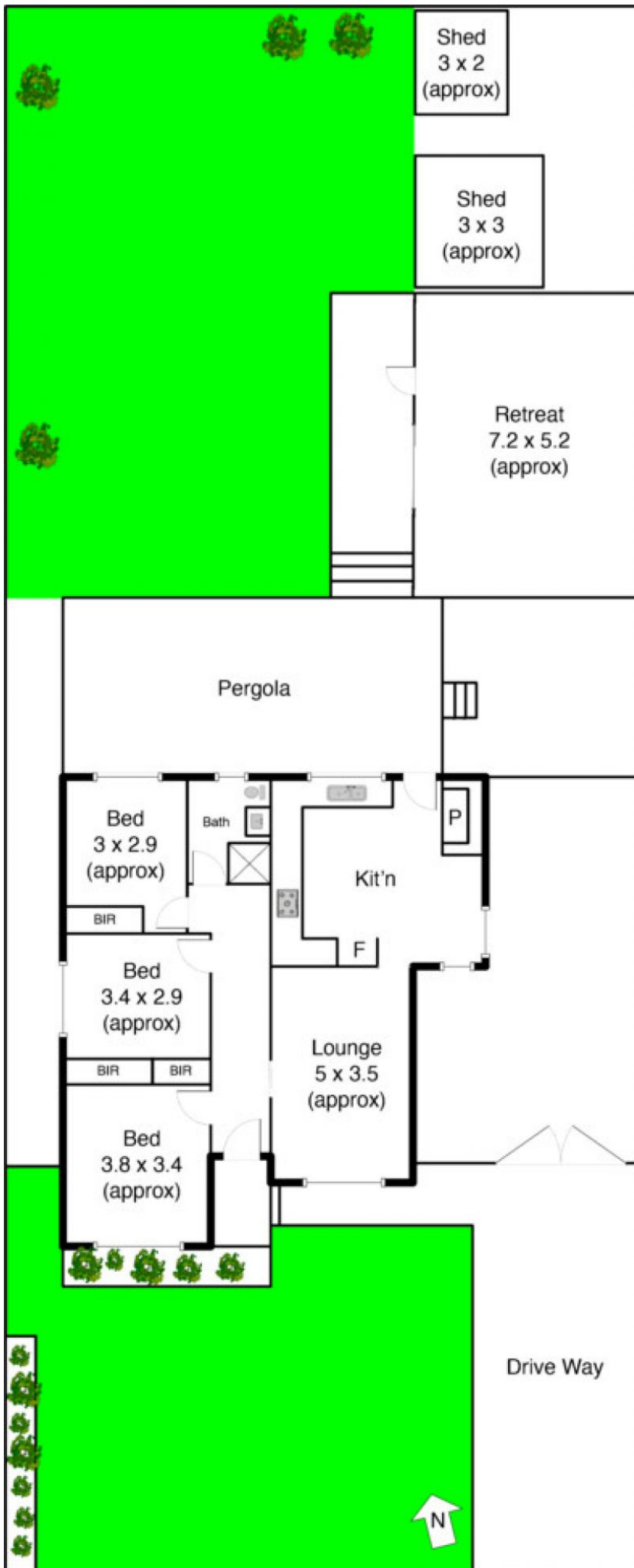
3  1  2 

Situated in the Central Melton, this home has everything to offer! Starting with a large allotment of approximately 582m², the home has ideal space for the growing family. Also offered, are three generously sized bedrooms, renovated central bathroom with and a good sized meals area with plenty of natural light. Kitchen has also been renovated with a 900mm stainless free standing cooker, dishwasher and plenty of cupboards and bench space, easy to entertain to the outdoor decked pergola area. Great size garage or Man Cave and plenty of backyard truly helps tick all the boxes! Within close walking proximity, schools, shops and Woodgrove Shopping Centre also nearby. Don't Delay, Enquire today!

Land Size : 582 sqm
View : <https://www.ypa.com.au/7398964>



Vickie Ramon
0403 194 621



Gretel Grove