



## 49 Stonehill Drive MADDINGLEY VIC

3 2 2

This modern and stylish family home is ready for you to move straight in and perfectly located in a highly sought after pocket of Maddingley!

**Land Size** : 448 sqm

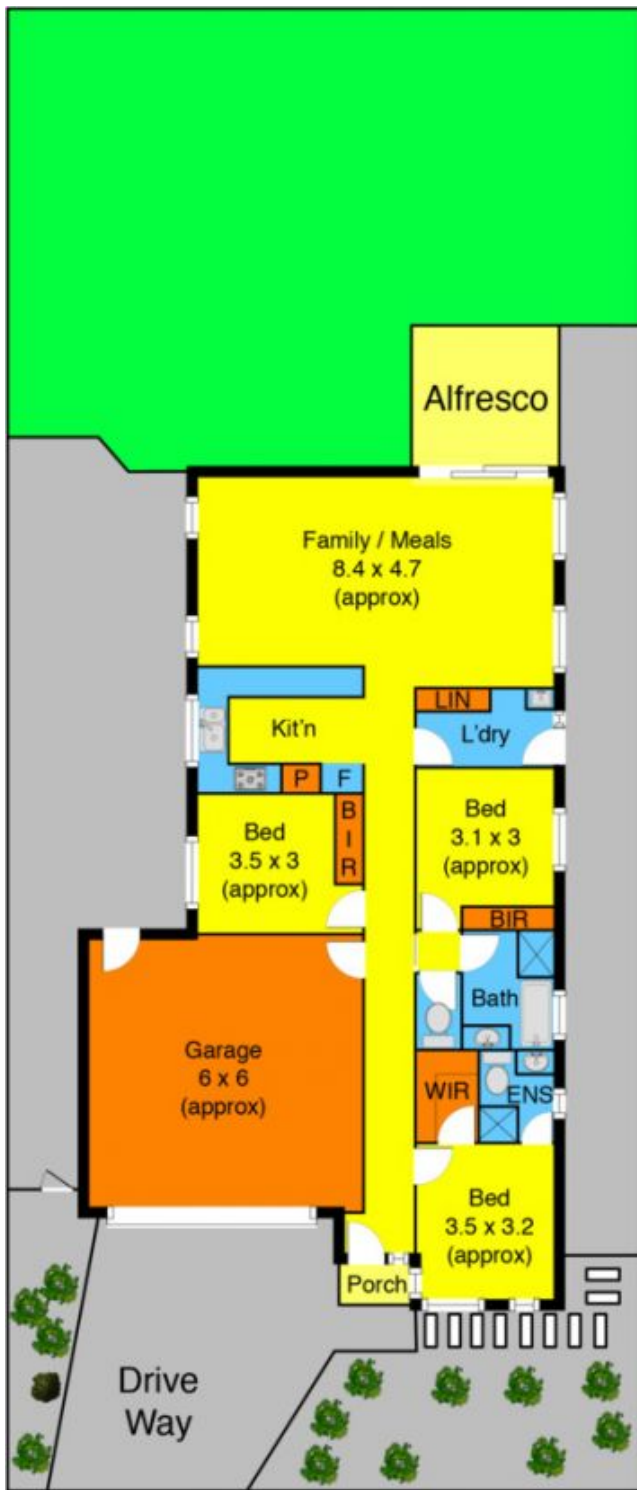
**View** : <https://www.ypa.com.au/7399263>

Comprising of three large bedrooms (main with ensuite and walk in robe), bright central bathroom, central living zone and extremely spacious kitchen with a large amount of bench space and storage, overlooking the on-flowing meals and open plan living area.

Moving outside, the alfresco compliment the large open space to the rear of the property.

Special features include: stainless steel appliances, heating and cooling, BIRs, breakfast bar and so much more!

This home was designed to the finest detail, built with



Stonehill Dr