

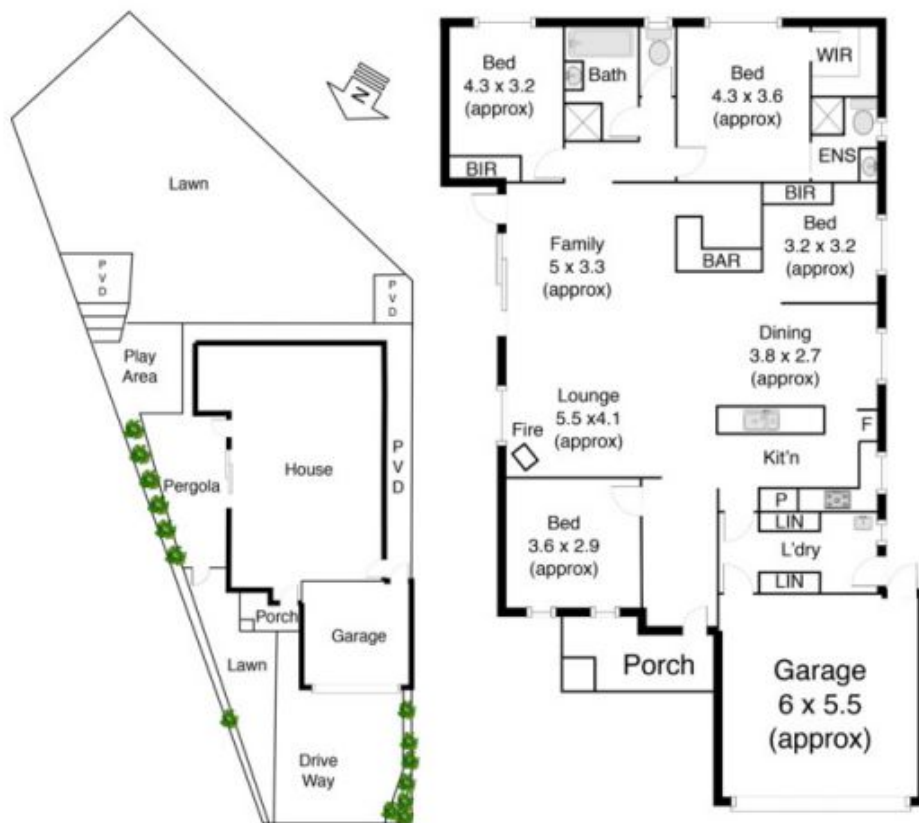
## 6 The Terrace MELTON VIC

4 2 2

The generous proportions of this home make for a sensational family domain located in the sought after Darlingsford estate, displaying an impressive blend of captivating modern features and unique contemporary style with elite upgrades throughout, this home is one not to miss. This home offers glamorous ambience throughout in combination with the finest & latest upgrades makes this a fantastic value for your money. Comprising of 4 bedrooms, 2 bathrooms, master bedroom with walk in robe, full en-suite, an extremely impressive amount of living space ensure room for all occasions with multiple zones, the beautiful kitchen not only appeals aesthetically but boasts a long list of upgrades including high quality appliances. The light-filled free flowing floor plan including impressive quality open alfresco area/enclosed BBQ & entertaining area, truly creating the perfect vista for entertaining. Extra Features include: High ceilings, double car garage, ducted

**Land Size** : 632 sqm

**View** : <https://www.ypa.com.au/7399292>



6 The Terrace Melton

All Dimensions are approximate

