



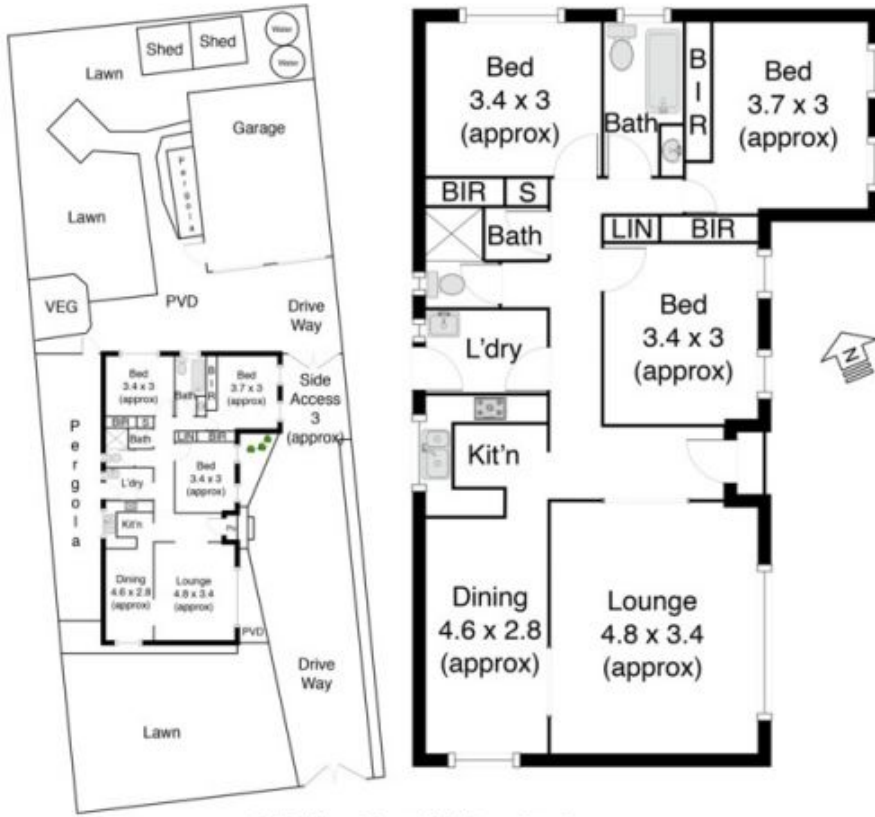
**13 Bridge Road MELTON SOUTH VIC**

**3**  **2**  **4** 

Looking for an investment property that has prime subdivision potential (STCA) to obtain huge future financial gains? This fantastic home perfectly positioned on a massive 578m<sup>2</sup> (approx) block, has so much character and endless potential. Located within walking distance from Melton South train station, medical centres, and all levels of schooling and recreation, you would be hard pushed to find a more appealing investment location. Comprising of three generous size bedrooms, large lounge room, meals area, central bathroom plus additional shower room, this fantastic home is complemented by its spacious kitchen. Other extras include ducted heating and evaporative cooling throughout, separate laundry with external access plus side access with a huge 4 car garage and much more. Truly a rare opportunity to purchase a property with the potential to build your investment portfolio. Call today to find out more and organise your inspection.

**Land Size** : 578 sqm

**View** : <https://www.ypa.com.au/7399293>



13 Bridge Road Melton South

All Dimensions are approximate

