



## 48 Manson Drive MELTON SOUTH VIC

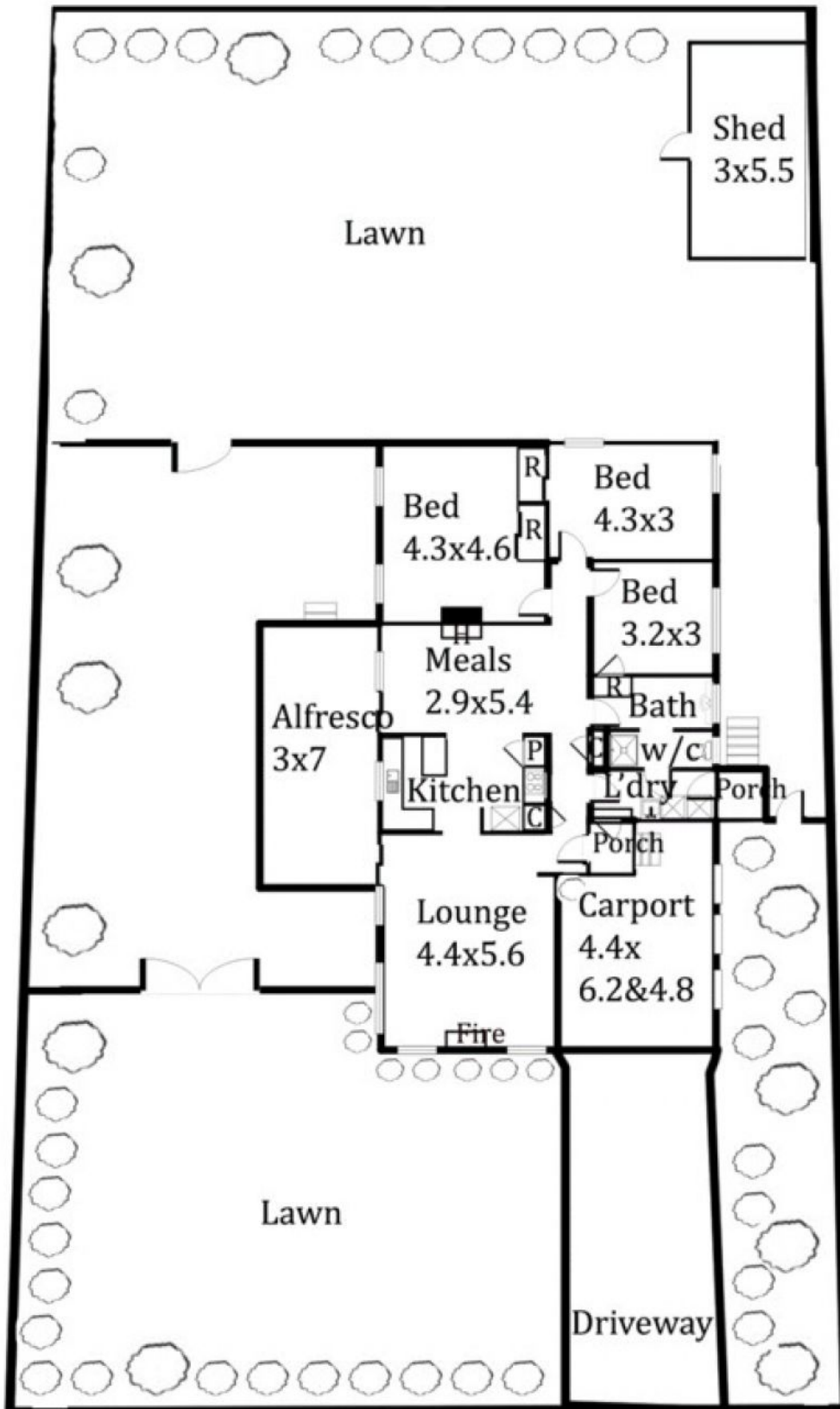
3 1 2

Set right in the heart of Melton South and offering a spacious layout is this much loved family home that would suit the investor or first home buyer. The formal living room with quality hard wooding flooring is inviting and leads to an updated kitchen adjoining a large meals area which overlooks a brilliant size backyard with town planning approval. Appointed with gas heating , air conditioning ,Roller Shutters throughout ,open fire place updated bathroom and single carport .With the train station a short stroll away ,sporting facilities, freeway access down the road you really can't ask for more .Currently in a Secured tenancy until April 2018 at \$1300.00 PCM . Be sure to inspect this very appealing property today as it sure to go quick. Investors please take note, this is perfect for you.

**Land Size** : 670 sqm  
**View** : <https://www.ypa.com.au/7399300>



**Vickie Ramon**  
0403 194 621



## 48 Manson Drive Melton South

Floor plan measurements are approximate and are for illustrative purposes only. While we do not doubt the floor plan's accuracy we make no guarantee, warranty or representation as to the accuracy and completeness of the floor plan. You or your advisors should conduct a careful investigation of the property to determine your satisfaction as to the suitability for your space requirements.