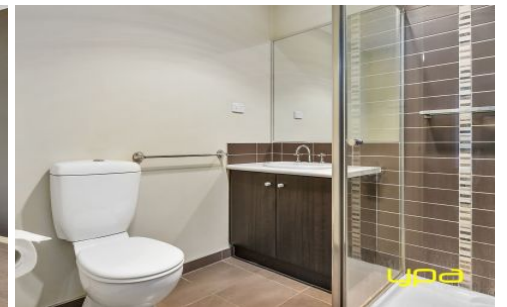


ypa



92 Dalray Crescent KURUNJANG VIC

4  2  2 

Upon entering this beautiful family home, you will instantly feel the ample space on offer.

Situated on a massive 697m² (approx.) In Kurunjangs most sought after area, this property offers not only a comfortable living environment, but a worthy investment as the Melton property market begins to take off. Boasting 2 large living areas, 2 fully equipped bathrooms and 4 generously sized bedrooms with built in robes and a full ensuite / Walk in Robe for the master bedroom. Spacious design and contemporary living, in conjunction with the open plan kitchen and meals area, provide a relaxing home environment for the whole family.

Special features include: quality window furnishings, heating / cooling, secure 2 car remote garage with internal and drive through access, Stainless steel appliances, landscaped gardens and much more.

Land Size : 697 sqm

View : <https://www.ypa.com.au/7399310>



Whilst every attempt has been made to ensure the accuracy of the floor plan contained here, measurements of doors, windows, rooms and any other items are approximate and no responsibility is taken for any error, omission, or mis-statement. This plan is for illustrative purposes only and should be used as such by any prospective purchaser. The services, systems and appliances shown have not been tested and no guarantee as to their operability or efficiency can be given.