



1/241 Gisborne - Melton Road KURUNJANG VIC

2  1 

Looking to invest? Looking for your first home? Looking to down size? Then look no further.

Comprising of two bedrooms, a large living area, well-appointed kitchen with adjoining meals area, updated bathroom, separate toilet and good-sized laundry. Everything required to make this property home.

Generous back yard allows for a great entertaining space and room for the kids to run around and play, with a garden shed for storage and drive through access there's not much else to ask for.

Only a short walk to public transport, schools, local parks and reserves, not to mention easy access to Melton Highway and the Western Freeway the location speaks for itself.

Currently tenanted for \$500 per fortnight, this is an opportunity to be missed.

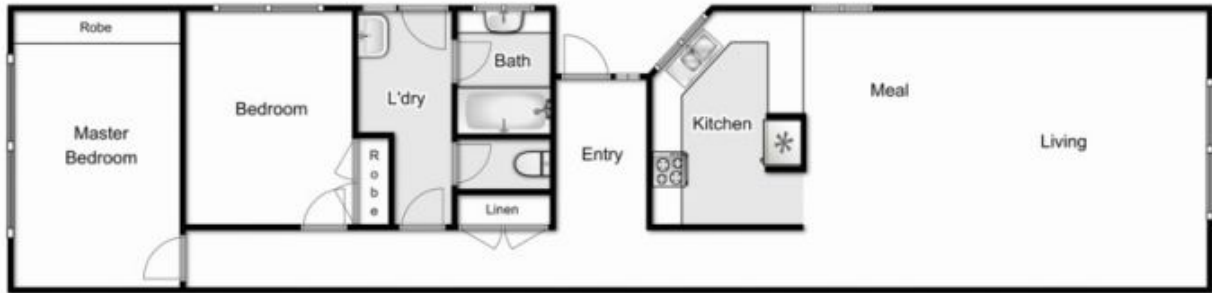
Call Ryan Anders today to arrange an inspection.

Land Size : 328 sqm

View : <https://www.ypa.com.au/7399486>



Ryan Anders
0434 900 300



1/241 Gisborne-Melton Road, Kurunjang

Whilst every attempt has been made to ensure the accuracy of the floor plan contained here, measurements of doors, windows, rooms and any other items are approximate and no responsibility is taken for any error, omission, or mis-statement. This plan is for illustrative purposes only and should be used as such by any prospective purchaser. The services, systems and appliances shown have not been tested and no guarantee as to their operability or efficiency can be given.