

22 Ormonde Esplanade HARKNESS VIC

4  2  2 

Situated in one of the most desirable locations of the Arnolds Creek Estate and in walking distance to bus stops, convenience stores and Arnolds Creek primary school, this wonderfully presented home built by Exclusive Homes is ready for you to move straight in.

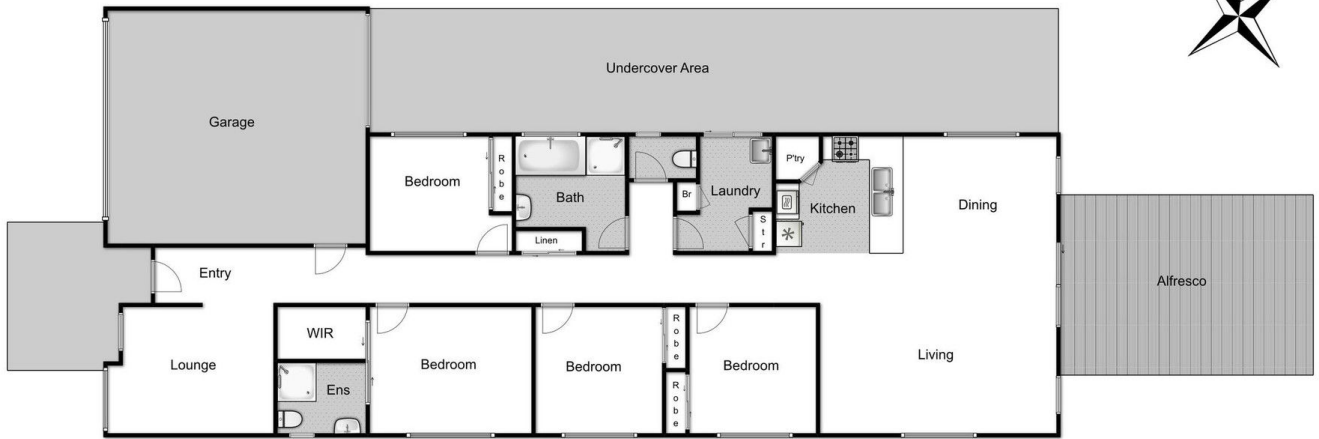
Entering this home you will be amazed by the generous sized formal lounge at the front of the home flowing to a spacious master bedroom complete with a bright ensuite and walk in robe, the remaining 3 bedrooms are serviced by a stunning central bathroom.

The heart of this sensational family domain, wraps itself around the modern kitchen featuring: ample storage and bench space, 900mm stainless steel appliances and pleasing views over the large open plan living/dining area.

Land Size : 480 sqm
View : <https://www.ypa.com.au/7399625>



Shane Spiteri
0488 980 115



22 Ormonde Esplanade, Harkness

Whilst every attempt has been made to ensure the accuracy of the floor plan contained here, measurements of doors, windows, rooms and any other items are approximate and no responsibility is taken for any error, omission, or mis-statement. This plan is for illustrative purposes only and should be used as such by any prospective purchaser. The services, systems and appliances shown have not been tested and no guarantee as to their operability or efficiency can be given.

