



1377 Glenmore Road GLENMORE VIC

3 1 2

Located in Glenmore, this beautiful 177-acre (approx.) property has limitless potential and so much to offer. With picturesque views of the White Elephant Reserve and Werribee Gorge State Park and the tranquillity of a country lifestyle but still only a short drive to Bacchus Marsh, here is your chance to live a more relaxed lifestyle.

Accompanying this land parcel is a beautiful home boasting three good sized bedrooms with built-in robes, central bathroom, well-appointed kitchen with plenty of bench space and ample storage, huge open meals and living area featuring a coonara and with more than enough space for the entire family.

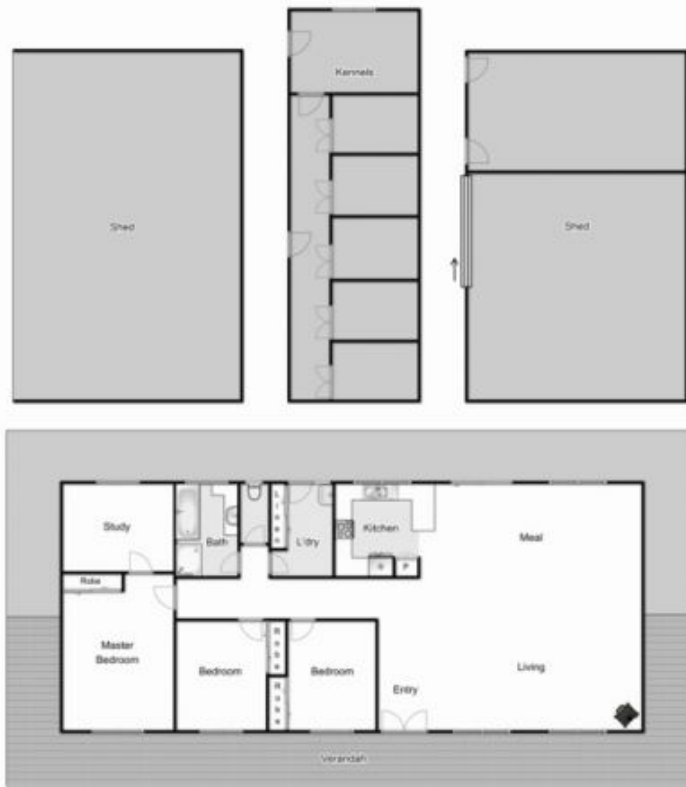
Special features of the property include: water tanks, corral, multiple sheds/workshops at various locations of the property, dog kennel with multiple pens, split system unit,

Land Size : 716374 sqm

View : <https://www.ypa.com.au/7399655>



Shane Spiteri
0488 980 115



1377 Glenmore Road, Glenmore

Whilst every attempt has been made to ensure the accuracy of the floor plan contained here, measurements of doors, windows, rooms and any other items are approximate and no responsibility is taken for any error, omission, or mis-statement. This plan is for illustrative purposes only and should be used as such by any prospective purchaser. The services, systems and appliances shown have not been tested and no guarantee as to their operability or efficiency can be given.

