



## 22 Citronelle Circuit BROOKFIELD VIC

3  2  2 

Perfectly located in one of Brookfields most sought after areas and situated on a large 600m<sup>2</sup> (approx.) parcel of land, this modern family home is ideal for family living.

**Land Size** : 600 sqm

**View** : <https://www.ypa.com.au/7399671>

Comprising of: three large bedrooms with BIRs, master w ensuite and WIR whilst the remaining bedrooms are serviced by a bright central bathroom. Showcasing separate living areas throughout the home including a kids retreat and at the heart of the home a large open plan living/dining area which is overseen by the open kitchen featuring ample storage, stainless steel appliances and a huge island bench.

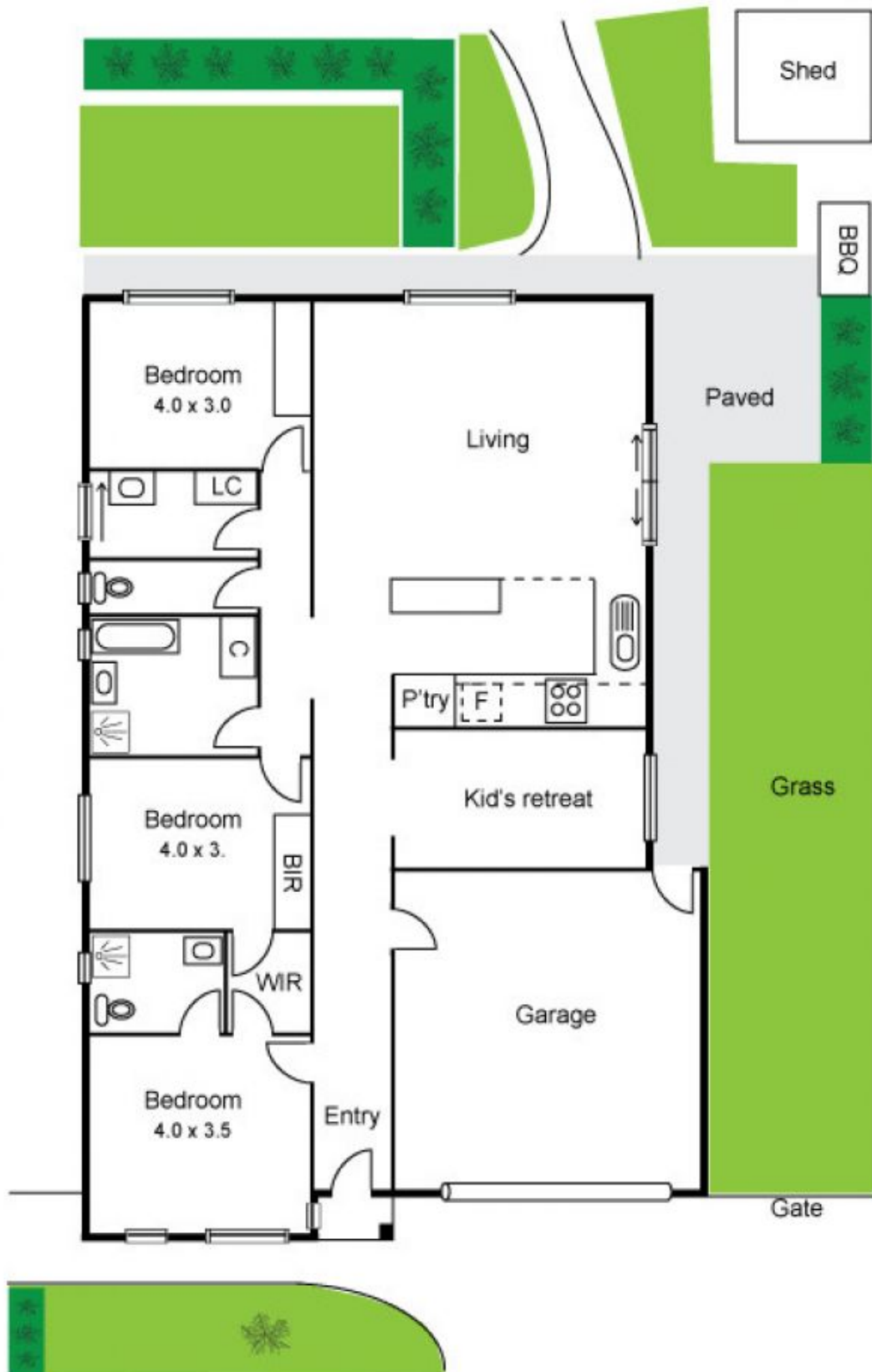


**Mark Edwards**  
0422 017 068

Outside the value is truly outlined with landscaped gardens, extensive concreting and amazing side access.

Properties like this dont last long on the market, call today

Brookfield  
22 Citronella Circuit



Whilst every precaution has been taken to ensure the accuracy of the above information prospective buyers are advised to make their own enquiries