

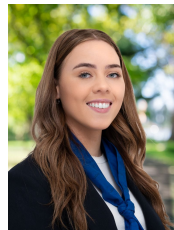


43 Bridge Road Melton South VIC

3  1  2 

Walking distance to schools, train station and shopping facilities is this original 3 bedroom family home in Melton South. Comprising; bright lounge room, overlooking dining and kitchen, central bathroom and gas wall heating. Step outside to a large double car garage.

View : <https://www.ypa.com.au/7400556>



Tahlia Hall
0422 419 589



Julie Hedley
0420 996 194