



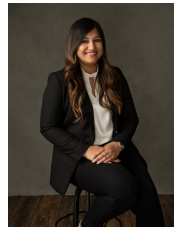
6 Elandra Way Cranbourne West VIC

3  1  2 

The convenient and functional kitchen is complemented by seamless indoor/outdoor living and dining, the perfect space to unwind & relax after a long day. A comfortable and spacious backyard is one of the most enjoyable and fun spaces of the home; combines indoor and outdoor living graciously, which serves as an additional entertainment & living area that caters for the year-round enjoyment, entertaining family & friends, children to play and to meet the various lifestyle requirements. The master bedroom is a gorgeous space that offers a quiet retreat away from the busyness of everyday life, completes with BIR. The other bedrooms are all a great size. The family bathroom features a separate bathtub and walk-in shower.

Land Size : 465 sqm

View : <https://www.ypa.com.au/7557361>

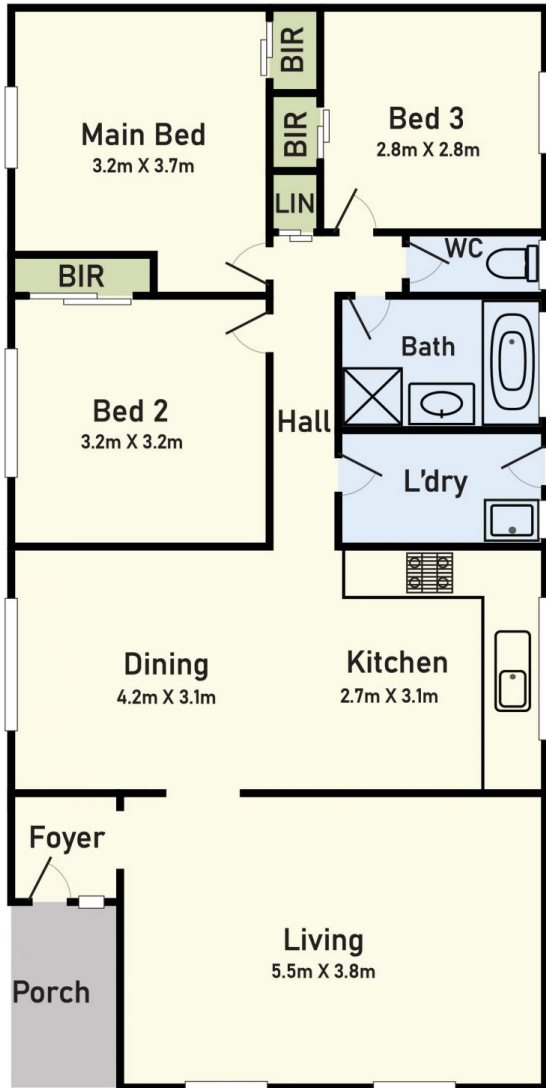


Nidhi Mahajan
0416 013 196

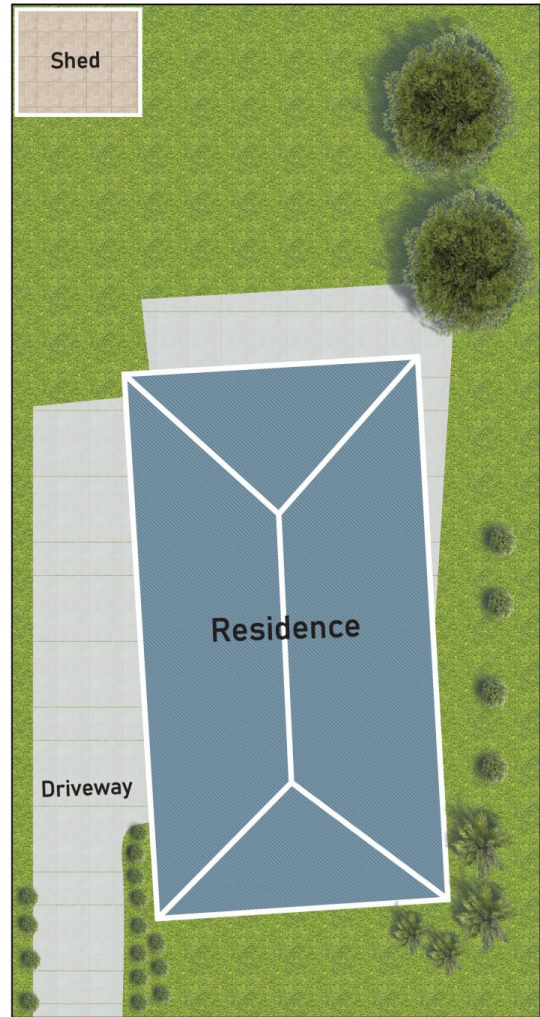
Main Features:

- ? Sizeable bedrooms
- ? Family bathroom with separate bath tub and shower

Floor Plan



Site Plan



6 Elandra Way, Cranbourne West, Vic 3977

* Dimensions are approximate and for illustrative purposes only