

2 Burdoo Street Rye VIC

3  2  2 

YPA RYE RENTAL DEPT IS PROUD TO PRESENT THIS BEAUTIFUL COASTAL HOME JUST MOMENTS FROM THE HEART OF RYE

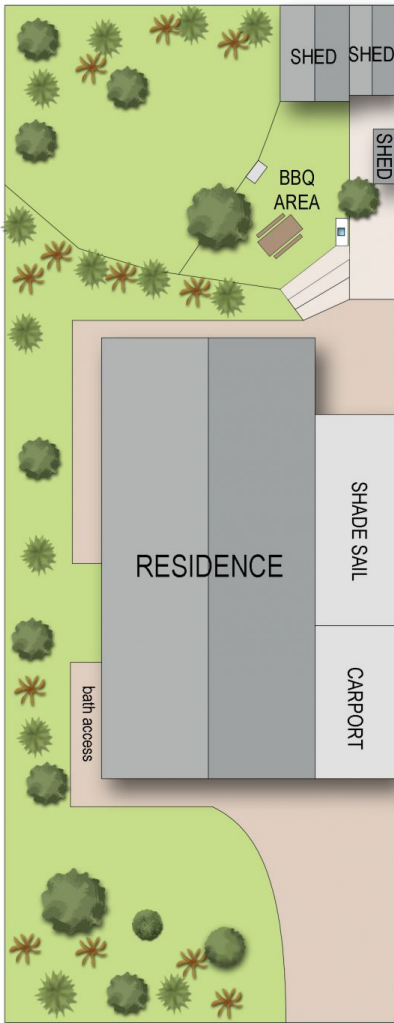
Land Size : 603 sqm
View : <https://www.ypa.com.au/7719450>

- Charming three bedroom plus study home set on a generous 569*m2 allotment.
- Located just minutes to Rye Village and foreshore.
- Sunny north-facing rear yard complete with spacious entertaining area, fire pit, and feature stone retaining walls.
- Modern kitchen and appliances.
- Beautifully renovated bathroom & ensuite.
- Sunny open plan kitchen/living area.

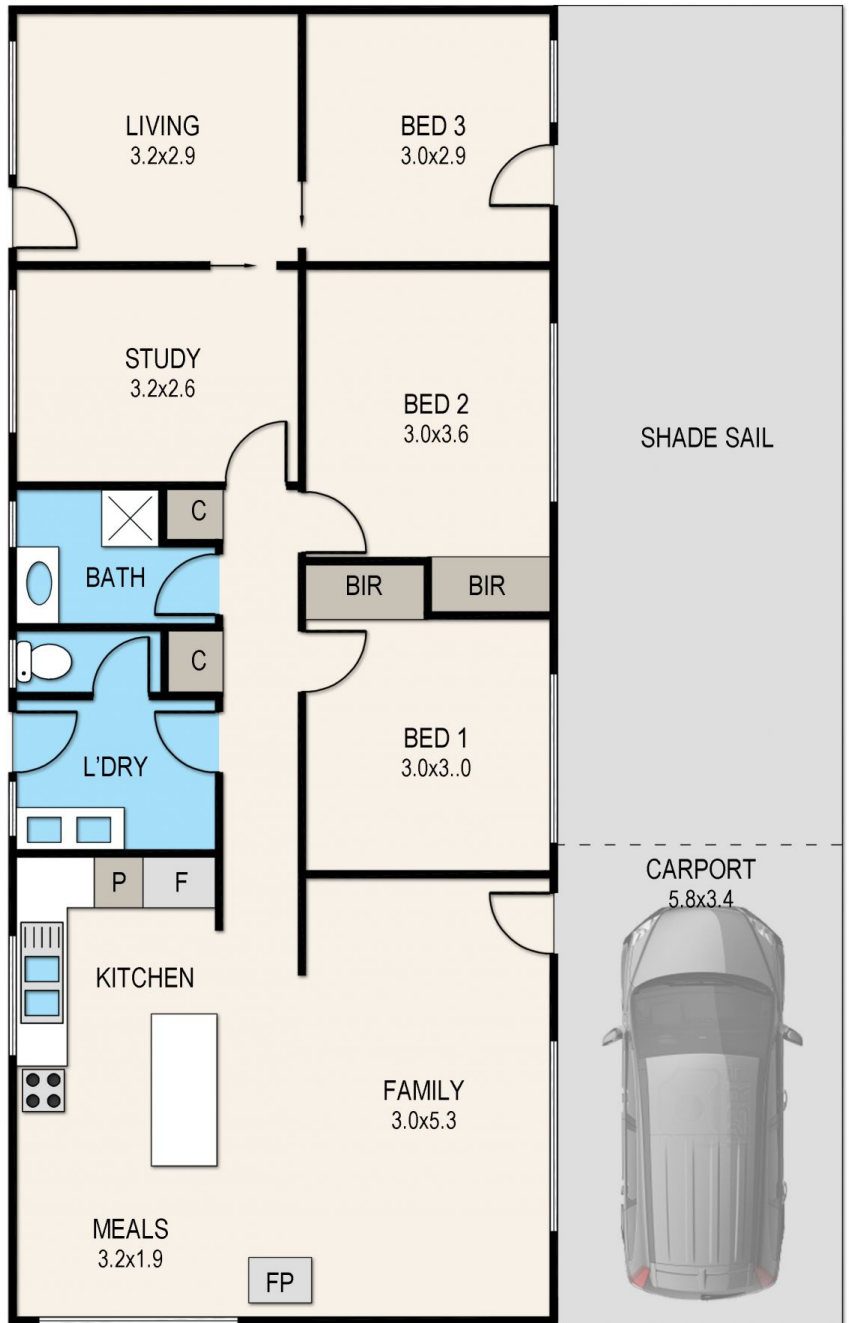


Jessica Trahar
0416 737 904

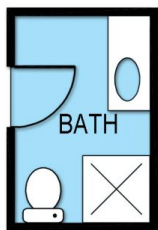
2 Burdoo Street, Rye



siteplan



floorplan



under house
not in position

Whilst every attempt has been made to ensure the accuracy of this floorplan, measurements of doors, windows, rooms and any other items are approximate only. The producer or the agent cannot be held responsible for any errors, omissions or misstatements. This plan is for illustrative purposes only and should be used as such.