



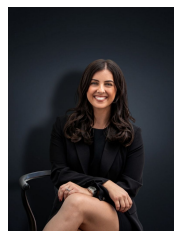
35 Arkins Circuit Tarneit VIC

3 2 2

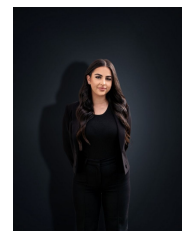
This well presented home is immaculate throughout and is the perfect entry into the real estate market! With a long list of upgrades throughout this home is move in ready. Brilliantly located within a short walk to Riverdale Village Shopping Centre, close by to Tarneit Rise Primary School and the Wetlands parks and walking tracks. Only a short drive to freeway access, Tarneit Gardens Shopping centre & Tarneit Train Station. Offering unrestricted views to Davis Creek and walking tracks, this home also offers;

- ? Three bedrooms
- ? Master bedroom with spacious walk in robe and ensuite
- ? Remaining bedrooms all with built in robes
- ? Central bathroom
- ? Open plan Kitchen / Meals and family living room
- ? Large hostess kitchen with quality stainless steel appliances, including dishwasher and 40mm stone

Price : \$550,000 - \$590,000
Land Size : 262 sqm
View : <https://www.ypa.com.au/7728113>

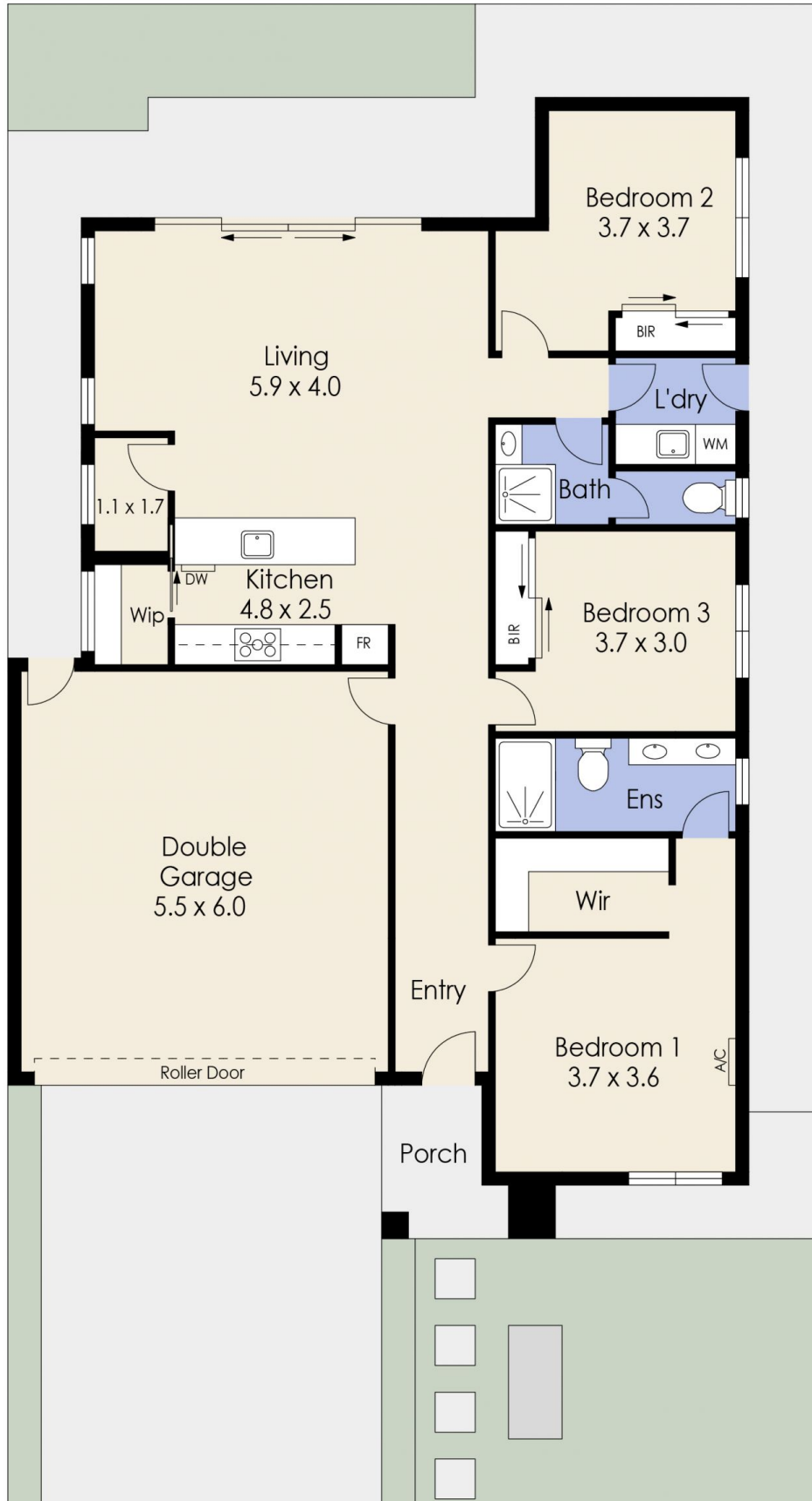


Kirsty Cunningham
0414 344 475



Stefanie Zahra
0406871722

35 Arkins Circuit, TARNEIT



Whilst every attempt has been made to ensure the accuracy of the floor plan contained here, measurements of doors, windows, rooms and any other items are approximate and no responsibility is taken for any error, omission, or mis-statement. This plan is for illustrative purposes only and should be used as such by any prospective purchaser. The services, systems and appliances shown have not been tested and no guarantee as to their operability or efficiency can be given.