

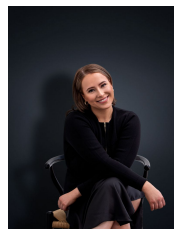
22B Hindmarsh Drive Wyndham Vale VIC

3 2 1

Positioned amongst quality homes within walking distance to Manor Lakes shopping centre, Manor Lakes College, bus stops, Wyndham Vale train station within minutes, childcare and lovely parklands scenic with walking tracks. The home offers;

- ? Three spacious fitted bedrooms
- ? Master with ensuite and walk in robe
- ? Central bathroom plus a downstairs powder room
- ? Formal lounge room upon entry
- ? Open plan family and meals area
- ? Covered Alfresco
- ? Ducted heating and split system cooling
- ? Single garage with internal access
- ? Quality appointments include; high ceilings, 6 star energy rating, solar boost gas hot water service, ducted heating, Stainless steel appliances, energy saving down lights and

View : <https://www.ypa.com.au/7763729>



Ali Dowling
0450 778 972