



6 Cherry Close Harkness VIC

4 2 2

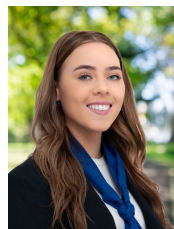
. Located in Arnolds Creek Estate with a choice of childcare options close by, a well-regarded primary school and kindergarten within a stroll and shops just moments away

. Nestled amongst established yet easy to maintain gardens in a quiet low-traffic area, this beautifully appointed home features a tranquil formal lounge along with a fabulous open plan living/dining area and entertainer's kitchen with stainless steel appliances and central island.

. A sparkling ensuite and walk-in robe are highlights of the serene master bedroom while the remaining bedrooms (built-in robes) share a bright family bathroom. Also offered are multiple split system heating/cooling units and a double garage with the convenience of a remote-controlled door.

. Bus stops are readily at hand, the Western Freeway is easily accessible for a straightforward work-day commute and there are numerous parks and reserves within striking distance for endless recreational enjoyment.

View : <https://www.ypa.com.au/7786465>



Tahlia Hall
0422 419 589



Julie Hedley
0420 996 194